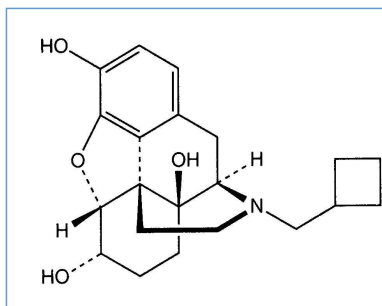


Stabilis



Nalbuphine hydrochloride



Noms commerciaux

Alambuphine	Egypte
Bufidol	Vénézuela
Bufigen	Mexique
Bufilem	Mexique
Bu finest	Mexique
Fabitec	Mexique
Gobbinal	Argentine
Intapan	Malaisie
Metanolone	Mexique
Nalbufin	Egypte, Suède
Nalbufina	Argentine, Chili, Mexique
Nalbuphin	Suisse
Nalbuphine	Egypte, Etats Unis d'Amérique, Roumanie
Nalcryn	Mexique
Nalfy	Inde
Nalpain	Allemagne, Egypte, Suède
Naphine	Malaisie
Nubain	Allemagne, Autriche, Canada, Chili, Emirats Arabes Unis, Etats Unis d'Amérique, Grande Bretagne, Grèce, Hongrie, Luxembourg, Pays bas, Suisse
Nubaina	Argentine
Onfor	Argentine



Stabilité des solutions

		1 mg/ml	-20°C		365			3264
		1 mg/ml	5°C		365			3264



Stabilité en mélange

		10 mg/ml	25°C	?	Paracetamol : 10 mg/ml	4	3571



Facteur influençant la stabilité

				1415
	NaH CO ₃			150



Compatibilités

		Nalbuphine hydrochloride : 10 mg/ml Aciclovir sodium : 5 mg/ml		2335
		Nalbuphine hydrochloride : 10 mg/ml Allopurinol sodium : 3 mg/ml		307
		Nalbuphine hydrochloride : 10 mg/ml Amifostine : 10 mg/ml		3
		Nalbuphine hydrochloride : 10 mg/ml Amphotericin B cholesteryl sulfate complex : 0,83 mg/ml		921
		Nalbuphine hydrochloride : 5 & 10 mg/ml Atropine sulfate : 0,2 & 0,5 mg/ml		616
		Nalbuphine hydrochloride : 10 mg/ml Aztreonam : 40 mg/ml		99
		Nalbuphine hydrochloride : 10 mg/ml Bivalirudin : 5 mg/ml		1713
		Nalbuphine hydrochloride : 1 mg/ml Blinatumomab : 0.125 & 0.375 µg/ml		3976
		Nalbuphine hydrochloride : 1 mg/ml Cefmetazole sodium : 100 mg/ml		93
		Nalbuphine hydrochloride : 10 mg/ml Cimetidine hydrochloride : 150 mg/ml		1438
		Nalbuphine hydrochloride : 10 mg/ml Cisatracurium besylate : 0.1 >> 5 mg/ml		299
		Nalbuphine hydrochloride : 10 mg/ml Cladribine : 0.5 mg/ml		1496
		Nalbuphine hydrochloride : 10 mg/ml Cladribine : 0.015 mg/ml		1496
		Nalbuphine hydrochloride : 2 mg/ml Defibrotide : 8 mg/ml		3728
		Nalbuphine hydrochloride : 10 mg/ml Dexmedetomidine : 4 µg/ml		1712
		Nalbuphine hydrochloride Diazepam		3672

		Nalbuphine hydrochloride : 2,5 >> 10 mg/ml Diazepam : 5 mg/ml		616
		Nalbuphine hydrochloride : 10 mg/ml Etoposide phosphate : 5 mg/ml		1410
		Nalbuphine hydrochloride : 10 mg/ml Filgrastim : 30 µg/ml		244
		Nalbuphine hydrochloride : 10 mg/ml Fludarabine phosphate : 1 mg/ml		492
		Nalbuphine hydrochloride : 10 mg/ml Granisetron hydrochloride : 0.05 mg/ml		182
		Nalbuphine hydrochloride : 10 mg/ml		1415
		Nalbuphine hydrochloride : 10 mg/ml Docetaxel : 0.9 mg/ml		1754
		Nalbuphine hydrochloride : 5 & 10 mg/ml Droperidol : 2,5 & 5 mg/ml		616
		Nalbuphine hydrochloride : 10 mg/ml Fenoldopam mesylate : 80 µg/ml		1803
		Nalbuphine hydrochloride : 10 mg/ml		301
		Nalbuphine hydrochloride : 10 mg/ml		150
		Nalbuphine hydrochloride : 10 mg/ml Gemcitabine hydrochloride : 10 mg/ml		1423
		Nalbuphine hydrochloride : 10 mg/ml Hetastarch : 60 mg/ml		1721
		Nalbuphine hydrochloride : 2,5 >> 10 mg/ml Hydroxyzine dihydrochloride : 50 mg/ml		616
		Nalbuphine hydrochloride : 10 mg/ml Ketorolac tromethamine : 30 mg/ml		476
		Nalbuphine hydrochloride : 10 mg/ml Lansoprazole : 0.55 mg/ml		1625
		Nalbuphine hydrochloride : 10 mg/ml Linezolid : 2 mg/ml		1925
		Nalbuphine hydrochloride : 10 mg/ml Melphalan : 0.1 mg/ml		169
		Nalbuphine hydrochloride : 10 mg/ml Methotrexate sodium : 30 mg/ml		150
		Nalbuphine hydrochloride : 5 mg/ml Midazolam hydrochloride : 2.5 mg/ml		404
		Nalbuphine hydrochloride : 10 mg/ml Nafcillin sodium : 33 mg/ml		1366
		Nalbuphine hydrochloride : 10 mg/ml Oxaliplatin : 0,5 mg/ml		1662
		Nalbuphine hydrochloride : 10 mg/ml Paclitaxel : 1.2 mg/ml		248
		Nalbuphine hydrochloride : 10 mg/ml Paracetamol : 10 mg/ml		3571
		Nalbuphine hydrochloride : 10 mg/ml Pemetrexed disodium : 20 mg/ml		1953
		Nalbuphine hydrochloride : 2,5 >> 10 mg/ml Pentobarbital sodium : 25 & 50 mg/ml		616
		Nalbuphine hydrochloride : 10 mg/ml Piperacillin sodium / tazobactam : 40/5 mg/ml		81

	Nalbuphine hydrochloride : 2,5 >> 10 mg/ml Prochlorperazine edysilate : 5 mg/ml		616
	Nalbuphine hydrochloride : 5 & 10 mg/ml Promethazine hydrochloride : 12,5 & 25 mg/ml		616
	Nalbuphine hydrochloride Promethazine hydrochloride		3672
	Nalbuphine hydrochloride : 10 mg/ml Promethazine hydrochloride : 25 mg/ml		518
	Nalbuphine hydrochloride : 10 mg/ml Propofol : 10 mg/ml	∅	300
	Nalbuphine hydrochloride : 10 mg/ml Ranitidine hydrochloride : 25 mg/ml	∅	58
	Nalbuphine hydrochloride : 10 mg/ml Remifentanil hydrochloride : 25 & 250 µg/ml	▲	59
	Nalbuphine hydrochloride : 10 mg/ml Sargramostim : 10 µg/ml	▲	335
	Nalbuphine hydrochloride : 5 & 10 mg/ml Scopolamine hydrobromide : 0,46 & 0,83 mg/ml		616
	Nalbuphine hydrochloride : 10 mg/ml Sodium bicarbonate : 14 mg/ml	∅	150
	Nalbuphine hydrochloride : 10 mg/ml Teniposide : 0.1 mg/ml	◆	905
	Nalbuphine hydrochloride : 10 mg/ml Thiotepa : 1 mg/ml	◆	249
	Nalbuphine hydrochloride : 10 mg/ml Vinorelbine tartrate : 1 mg/ml	▲	84



Voie d'administration



Bibliographie

	Type	Source
3	Revue	Trissel LA, Martinez JF. Compatibility of amifostine with selected drugs during simulated Y-site administration. Am J Health-Syst Pharm 1995 ; 52: 2208-2212.
58	Revue	Parker WA. Physical compatibility of ranitidine HCl with preoperative injectable medications. Can J Hosp Pharm 1985 ; 38: 160-161.
59	Revue	Trissel LA, Gilbert DL, Martinez JF, Kim MC. Compatibility of remifentanil hydrochloride with selected drugs during simulated Y-site administration. Am J Health-Syst Pharm 1997 ; 54: 2192-2196.
81	Revue	Trissel LA, Martinez JF. Compatibility of piperacillin sodium plus tazobactam with selected drugs during simulated Y-site injection. Am J Hosp Pharm 1994 ; 51: 672-678.

84	Revue	Trissel LA, Martinez JF. Visual, turbidimetric, and particle-content assessment of compatibility of vinorelbine tartrate with selected drugs during simulated Y-site injection. Am J Hosp Pharm 1994 ; 51: 495-499.
93	Revue	Hutchings SR, Rusho WJ, Tyler LS. Compatibility of cefmetazole sodium with commonly used drugs during Y-site delivery. Am J Health-Syst Pharm 1996 ; 53: 2185-2188.
99	Revue	Trissel LA, Martinez JF. Compatibility of aztreonam with selected drugs during simulated Y-site administration. Am J Health-Syst Pharm 1995 ; 52: 1086-1090.
150	Revue	Aujoulat P, Coze C, Braguer D, Raybaud C. Physicochemical compatibility of methotrexate with co-administered drugs during cancer chemotherapy regimens. J Pharm Clin 1993 ; 12: 31-35.
169	Revue	Trissel LA, Martinez JF. Physical compatibility of melphalan with selected drugs during simulated Y-site administration. Am J Hosp Pharm 1993 ; 50: 2359-2363.
182	Revue	Trissel LA, Gilbert DL, Martinez JF. Compatibility of granisetron hydrochloride with selected drugs during simulated Y-site administration. Am J Health-Syst Pharm 1997 ; 54: 56-60.
244	Revue	Trissel LA, Martinez JF. Compatibility of filgrastim with selected drugs during simulated Y-site administration. Am J Hosp Pharm 1994 ; 51: 1907-1913.
248	Revue	Trissel LA, Martinez JF. Turbidimetric assessment of the compatibility of taxol with 42 other drugs during simulated Y-site injection. Am J Hosp Pharm 1993 ; 50: 300-304.
249	Revue	Trissel LA, Martinez JF. Compatibility of thiotepa (lyophilized) with selected drugs during simulated Y-site administration. Am J Health-Syst Pharm 1996 ; 53: 1041-1045.
299	Revue	Trissel LA, Martinez JF, Gilbert DL. Compatibility of cisatracurium besylate with selected drugs during simulated Y-site administration. Am J Health-Syst Pharm 1997 ; 54: 1735-1741.
300	Revue	Trissel LA, Gilbert DL, Martinez JF. Compatibility of propofol injectable emulsion with selected drugs during simulated Y-site administration. Am J Health-Syst Pharm 1997 ; 54: 1287-1292.
301	Revue	Trissel LA, Gilbert DL, Martinez JF, Baker MB, Walter WV, Mirtallo JM. Compatibility of parenteral nutrient solutions with selected drugs during simulated Y-site administration. Am J Health-Syst Pharm 1997 ; 54: 1295-1300.
307	Revue	Trissel LA, Martinez JF. Compatibility of allopurinol sodium with selected drugs during simulated Y-site administration. Am J Hosp Pharm 1994 ; 51: 1792-1799.
335	Revue	Trissel LA, Bready BB, Kwan JW, Santiago NM. Visual compatibility of sargramostim with selected antineoplastic agents, anti-infectives, or other drugs during simulated Y-site injection. Am J Hosp Pharm 1992 ; 49: 402-406.
404	Revue	Forman JK, Souney PF. Visual compatibility of midazolam hydrochloride with common preoperative injectable medications. Am J Hosp Pharm 1987 ; 44: 2298-2299.
476	Revue	Knapp AJ, Mauro VF, Alexander KS. Incompatibility of ketorolac tromethamine with selected postoperative drugs. Am J Hosp Pharm 1992 ; 49: 2960-2962.

492	Revue	Trissel LA, Parks NPT, Santiago NM. Visual compatibility of fludarabine phosphate with antineoplastic drugs, anti-infectives, and other selected drugs during simulated Y-site injection. Am J Hosp Pharm 1991 ; 48: 2186-2189.
518	Revue	Jimenez MD. Visual compatibility of nalbuphine hydrochloride and promethazine hydrochloride. Am J Hosp Pharm 1988 ; 45: 1278.
616	Revue	Jump WG, Plaza VM, Poremba A. Compatibility of nalbuphine hydrochloride with other preoperative medications. Am J Hosp Pharm 1982 ; 39: 841-843.
905	Revue	Trissel LA, Martinez JF. Screening teniposide for Y-site physical incompatibilities. Hosp Pharm 1994 ; 29: 1010-1017.
921	Revue	Trissel LA, Gilbert DL, Martinez JF. Incompatibility and compatibility of amphotericin B cholesteryl sulfate complex with selected other drugs during simulated Y-site administration. Hosp Pharm 1998 ; 33: 284-292.
1366	Revue	Jeglum EL, Winter E, Kotos M. Nafcillin sodium incompatibility with acidic solutions. Am J Hosp Pharm 1981 ; 38: 462,464.
1410	Revue	Trissel LA, Martinez JF, Simmons M. Compatibility of etoposide phosphate with selected drugs during simulated Y-site injection. J Am Pharm Assoc 1999 ; 39: 141-145.
1415	Revue	Trissel L.A, Gilbert D.L, Martinez J.F, Baker M.B, Walter W.V, Mirtallo J.M. Compatibility of medications with 3-in-1 parenteral nutrition admixtures. JPEN 1999 ; 23: 67-74.
1423	Revue	Trissel LA, Martinez JF, Gilbert DL. Compatibility of gemcitabine hydrochloride with 107 selected drugs during simulated Y-site injection. J Am Pharm Assoc 1999 ; 39: 514-518.
1438	Revue	Souney PF, Solomon MA, Stancher D. Visual compatibility of cimetidine hydrochloride with common preoperative injectable medications. Am J Hosp Pharm 1984 ; 41: 1840-1841.
1496	Revue	Trissel LA, Martinez JF, Gilbert DL. Screening cladribine for Y-site physical compatibility with selected drugs. Hosp Pharm 1996 ; 31: 1425-1428.
1625	Revue	Trissel LA, Saenz C, Williams YW, Ingram D. Incompatibilities of lansoprazole injection with other drugs during simulated Y-site coadministration. Int J Pharm Compound 2001 ; 5: 314-321.
1662	Revue	Trissel LA, Saenz CA, Ingram DS, Ogundele AB. Compatibility screening of oxaliplatin during simulated Y-site administration with other drugs. J Oncol Pharm Practice 2002 ; 8: 33-37.
1712	Revue	Trissel LA, Saenz CA. Compatibility screening of Precedex during simulated Y-site administration with other drugs. Int J Pharm Compound 2002 ; 6: 230-233.
1713	Revue	Trissel LA, Saenz CA. Compatibility screening of bivalirudin during simulated Y-site administration with other drugs. Int J Pharm Compound 2002 ; 6: 311-315.
1721	Revue	Trissel LA, Williams KY, Baker MB. Compatibility screening of Hextend during simulated Y-site administration with other drugs. Int J Pharm Compound 2001 ; 5: 69-72.
1754	Revue	Trissel LA, Gilbert DL, Wolkin AC. Compatibility of docetaxel with selected drugs during simulated Y-site administration. Int J Pharm Compound 1999 ; 3: 241-244.

1803	Revue	Trissel, LA, Saenz CA, Ogundele OB, Ingram D, Baker MB. Compatibility of fenoldopam mesylate with other drugs during simulated Y-site administration. Am J Health-Syst Pharm 2003 ; 60: 80-85.
1925	Revue	Trissel LA , Williams KY, Gilbert DL. Compatibility screening of linezolid injection during simulated Y-site administration with other drugs and infusion solutions. J Am Pharm Assoc 2000 ; 40: 515-519.
1953	Revue	Trissel LA, Saenz CA, Ogundele AB, Ingram DS. Physical compatibility of pemetrexed disodium with other drugs during simulated Y-site administration. Am J Health-Syst Pharm 2004 ; 61: 2289-2293.
2335	Revue	Canann D, Tyler L.S, Barker B, Condie C. Visual compatibility of i.v. medications routinely used in bone marrow transplant recipients Am J Health-Syst Pharm 2009 ; 66, 8: 727-729
3264	Poster	Hammer C, Perello L, Dory A, Lev?que D, Ubeaud-S?quier G. Nalbuphine stability at 1 mg/mL concentration. AAPS Congress - Washington, October 2011 2011
3571	Revue	Anderson C, Boehme S, Ouellette J, Stidham C, MacKay M. Physical and Chemical Compatibility of Injectable Acetaminophen During Simulated Y-Site Administration. Hosp Pharm 2014 ; 49, 1: 42-47.
3672	Laboratoire	Nalbuphine Mylan - Résumé des caractéristiques du produit Mylan SAS 2016
3728	Revue	Correard F, Savry A, Gauthier-Villano L, Pisano P, Pourroy B. Visual compatibility of defibrotide with selected drugs during simulated Y-site administration. Am J Health-Syst Pharm 2014 ; 71: 1288-1291.
3976	Revue	Du Repaire T, Vigne P, Guedon A, Gauthier-Villano L, Bertault Peres P, Pourroy B. Visual compatibility of blinatumomab with selected co-administrated drugs during simulated Y-site administration. Am J Health-Syst Pharm 2017 ; 74,16 : 1217-1218



Dictionnaire

 Antidote	 Injectable
 Noms commerciaux	 Stabilité des solutions
 Contenant	 Molécule
 Concentration	 Température
 Conservation	 Durée de stabilité
 Biosimilaire	 Données conflictuelles
 Bibliographie	 Seringue polypropylène
 Chlorure de sodium 0,9%	 A l'abri de la lumière
 Jour	 Stabilité en mélange
 Solvant	 Molécule
 Eau pour préparation injectable	 Non précisée
 Heure	 Facteur influençant la stabilité
 Nutrition parentérale (mélange ternaire)	 Provoque
 Dégradation	 NaHCO ₃
 Compatibilités	 Compatible
 Précipitation en 1 heure	 Incompatible
 Glucose 5%	 Précipitation immédiate
 NaCl 0,9% + bactériostatique	 Incompatibilité non précisée
 Instabilité de l'émulsion immédiate	 Turbidité immédiate
 Nutrition parentérale (mélange binaire)	 Dégagement gazeux
 Solvant spécifique	 Aucun
 Turbidité en 30 minutes	 Voie d'administration
 Intraveineuse	 Intramusculaire
 Sous cutanée	 Perfusion SC continue
 Bibliographie	 Dictionnaire