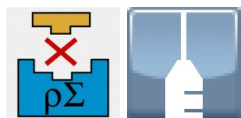
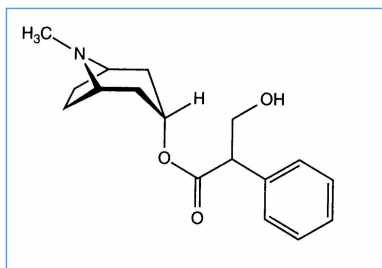


Stabilis



Atropine sulfate



Noms commerciaux

Atropen	Etats Unis d'Amérique
Atropi S	Italie
Atropin	Danemark, Finlande, Islande, Norvège, Suède, Turquie, Vénézuéla
Atropina	Argentine, Colombie, Equateur, Espagne, Italie, Portugal, Vénézuéla
Atropina sulfato	Chili, Colombie, Equateur, Italie, Pérou
Atropine	Arabie Saoudite, Australie, Canada, France, Grande Bretagne, Grèce, Irlande, Maroc, Nouvelle Zélande, Tunisie
Atropine sulf ES	Arabie Saoudite
Atropine sulphate	Arabie Saoudite, Egypte, Irlande, Malaisie
Atropinesulfate	Belgique, Canada, Egypte, Emirats Arabes Unis, Etats Unis d'Amérique, Luxembourg, Malaisie, Nouvelle Zélande
Atropinsulfat	Allemagne, Autriche, Luxembourg, Suisse
Atropinum sulfuricum	Allemagne, Autriche, Hongrie, Pologne, Suisse
Atropion	Brésil
Atropisa	Brésil, Chili, Equateur, Mexique
Dicatro	Iran
Endatropina	Argentine
Klonatropina	Argentine
Minijet Atropine	Grande Bretagne
Stellatropine	Belgique
Sulfat de atropina	Roumanie
Sulfato de atropina	Argentine, Equateur



Stabilité des solutions

Icon 1	Icon 2	Icon 3	Icon 4	Icon 5	Icon 6	Icon 7	Icon 8	Icon 9
		2 mg/ml	23°C		364			2297
		2 mg/ml	35°C		28			2297
		2 mg/ml	5°C		364			2297



Stabilité en mélange



















		0,4 & 1 mg/ml	20°C-25°C		Tirofiban : 50 µg/ml	4		1603
		0,19 mg/ml	25°C		Palonosetron hydrochloride : 25 µg/ml	4		2279
		0,133 mg/ml	23°C		Ondansetron hydrochloride : 1,33 mg/ml	24		815
		0,133 mg/ml	4°C		Ondansetron hydrochloride : 1,33 mg/ml	24		815



Compatibilités

	Atropine sulfate : 0,4 mg/ml Amiodarone hydrochloride : 6 mg/ml	1611	
	Atropine sulfate : 0,4 mg/ml Bivalirudin : 5 mg/ml	1944	
	Atropine sulfate : 0.4 mg/ml Caffeine : 10 mg/ml	3964	
	Atropine sulfate : 0.13 & 0.17 mg/ml Cimetidine hydrochloride : 85.7 & 100 mg/ml	1203	
		Atropine sulfate Cisplatin	3578
	Atropine sulfate : 0.1 mg/ml Dobutamine hydrochloride : 2 mg/ml	1041	
	Atropine sulfate : 0.4 mg/ml Etomidate : 2 mg/ml	319	
	Atropine sulfate : 0,4 mg/ml	RL 4603	
	Atropine sulfate : 0,4 mg/ml Amoxicillin sodium / clavulanic acid : 100/10 mg/ml	3824	
	Atropine sulfate : 0,4 mg/ml Argatroban : 1 mg/ml	1964	
		Atropine sulfate Calcium gluconate	3644
	Atropine sulfate : 0.4 mg/ml Cloxacillin sodium : 100 mg/ml	3012	
	Atropine sulfate : 0,017 mg/ml Dobutamine hydrochloride : 0,17 mg/ml	1221	
	Atropine sulfate : 0,4 mg/ml Doripenem : 5 mg/ml	2262	
	Atropine sulfate Eptifibatide	3934	
	Atropine sulfate : 0.1 mg/ml Famotidine : 0.2 mg/ml	398	
	Atropine sulfate : 0.1 mg/ml Fenoldopam mesylate : 80 µg/ml	1803	

	Atropine sulfate : 0.4 mg/ml Fentanyl citrate : 25 µg/ml		1974
	Atropine sulfate : 0,06 mg/ml Furosemide : 1 mg/ml		1232
	Atropine sulfate : 0.5 mg/ml Heparin sodium : 1 UI/ml	RL	1228
	Atropine sulfate : 0.5 mg/ml Heparin sodium : 1 UI/ml		1228
	Atropine sulfate : 0.5 mg/ml Hydrocortisone sodium succinate : 1 mg/ml	RL	1228
	Atropine sulfate : 0.5 mg/ml Hydrocortisone sodium succinate : 1 mg/ml		1228
	Atropine sulfate : 0.4 mg/ml Hydromorphone hydrochloride : 0.5 mg/ml		1974
	Atropine sulfate Hydroxocobalamin		3932
	Atropine sulfate : 0.4 mg/ml Ketamine hydrochloride : 50 mg/ml		2109
	Atropine sulfate : 0.04 mg/ml Meropenem : 1 & 20 mg/ml		266
	Atropine sulfate : 0.4 mg/ml Meropenem : 1 & 50 mg/ml		266
	Atropine sulfate : 0.4 mg/ml Meropenem : 50 mg/ml		4319
	Atropine sulfate : 0.4 mg/ml Methadone hydrochloride : 1 mg/ml		1974
	Atropine sulfate : 0.2 mg/ml Midazolam hydrochloride : 2.5 mg/ml		404
	Atropine sulfate : 0.5 mg/ml Morphine hydrochloride : 2.5 >> 15 mg/ml		1757
	Atropine sulfate : 0.4 mg/ml Morphine sulfate : 1 mg/ml		1974
	Atropine sulfate : 0.4 mg/ml N-acetylcysteine : 200 mg/ml		3766
	Atropine sulfate : 0.4 mg/ml Nafcillin sodium : 33 mg/ml		1366
	Atropine sulfate : 0,2 & 0,5 mg/ml Nalbuphine hydrochloride : 5 & 10 mg/ml		616
	Atropine sulfate : 0.4 mg/ml Naloxone hydrochloride : 0.4 mg/ml		3408
	Atropine sulfate : 0.04 mg/ml Netilmicin sulfate : 3 mg/ml		1200
	Atropine sulfate : 0.133 mg/ml Ondansetron hydrochloride : 1.33 mg/ml		815
	Atropine sulfate : 0.4 mg/ml Palonosetron hydrochloride : 50 µg/ml		2279
	Atropine sulfate Pantoprazole sodium		2090
	Atropine sulfate : 0.4 mg/ml Paracetamol : 10 mg/ml		4742
	Atropine sulfate : 0.17 mg/ml Pentobarbital sodium : 28.6 mg/ml		1203

	Atropine sulfate : 0.5 mg/ml Potassium chloride : 40 mEq/l	RL	1228
	Atropine sulfate : 0.5 mg/ml Potassium chloride : 40 mEq/l		1228
	Atropine sulfate : 0.1 mg/ml Propofol : 10 mg/ml		300
	Atropine sulfate : 0.4 mg/ml Propofol : 2 mg/ml		319
	Atropine sulfate : 0,4 mg/ml Ranitidine hydrochloride : 25 mg/ml		58
	Atropine sulfate : 1 mg/ml Sugammadex : 100 mg/ml		3372
	Atropine sulfate : 0.4 mg/ml Thiopental sodium : 25 mg/ml		319
	Atropine sulfate : 0,4 & 1 mg/ml Tirofiban : 50 µg/ml		1603
	Atropine sulfate Tirofiban		1512
	Atropine sulfate : 0.0008 mg/ml Verapamil hydrochloride : 0.08 mg/ml		1057



Voie d'administration



Bibliographie

	Type	Source
58	Revue	Parker WA. Physical compatibility of ranitidine HCl with preoperative injectable medications. Can J Hosp Pharm 1985 ; 38: 160-161.
266	Revue	Patel PR. Compatibility of meropenem with commonly used injectable drugs. Am J Health-Syst Pharm 1996 ; 53: 2853-2855.
300	Revue	Trissel LA, Gilbert DL, Martinez JF. Compatibility of propofol injectable emulsion with selected drugs during simulated Y-site administration. Am J Health-Syst Pharm 1997 ; 54: 1287-1292.
319	Revue	Hadzija BW, Lubarsky DA. Compatibility of etomidate, thiopental sodium, and propofol injections with drugs commonly administered during induction of anesthesia. Am J Health-Syst Pharm 1995 ; 52: 997-999.
398	Revue	Jay GT, Fanikos J, Souney PF. Visual compatibility of famotidine with commonly used critical-care medications during simulated Y-site injection. Am J Hosp Pharm 1988 ; 45: 1556-1557.
404	Revue	Forman JK, Souney PF. Visual compatibility of midazolam hydrochloride with common preoperative injectable medications. Am J Hosp Pharm 1987 ; 44: 2298-2299.

616	Revue	Jump WG, Plaza VM, Poremba A. Compatibility of nalbuphine hydrochloride with other preoperative medications. Am J Hosp Pharm 1982 ; 39: 841-843.
815	Revue	Stewart JT, Warren FW, King DT, Venkateshwaran TG, Fox JL. Stability of ondansetron hydrochloride and 12 medications in plastic syringes. Am J Health-Syst Pharm 1998 ; 55: 2630-2634.
1041	Revue	Hasegawa GR, Eder JF. Visual compatibility of dobutamine hydrochloride with other injectable drugs. Am J Hosp Pharm 1984 ; 41: 949-951.
1057	Revue	Cutie MR. Compatibility of verapamil hydrochloride injection with commonly used additives. Am J Hosp Pharm 1983 ; 40: 1205-1207.
1200	Revue	Chaudry IA, Bruvey KP, Hurlburt LE, Oden EM. Compatibility of netilmycin sulfate injection with commonly used intravenous injections and additives. Am J Hosp Pharm 1981 ; 38: 1737-1742.
1203	Revue	Yuhus EM, Lofton FT, Baldinus JG, Mayron D. Cimetidine hydrochloride compatibility with preoperative medications. Am J Hosp Pharm 1981 ; 38: 1173-1174.
1221	Revue	Dahlin PA, Paredes SM. Visual compatibility of dobutamine with seven parenteral drug products. Am J Hosp Pharm 1980 ; 37: 460,464.
1228	Revue	Allen LV, Stiles ML. Compatibility of various admixtures at Y-injection sites of intravenous administration sets. Part2. Am J Hosp Pharm 1981 ; 38: 380-381.
1232	Revue	Beatson C, Taylor A. A physical compatibility study of furosemide & flucloxacillin injections. Br J Pharm Pract 1987 ; 9: 223-226, 236.
1366	Revue	Jeglum EL, Winter E, Kotos M. Nafcillin sodium incompatibility with acidic solutions. Am J Hosp Pharm 1981 ; 38: 462,464.
1512	Laboratoire	Tirofiban (Aggrastat®) - Summary of Product Characteristics Beacon Pharmaceuticals Ltd 2015
1603	Revue	Bergquist PA, Manas D, Hunke WA, Reed RA. Stability and compatibility of tirofiban hydrochloride during simulated Y-site administration with other drugs. Am J Health-Syst Pharm 2001 ; 58: 1218-1223.
1611	Revue	Chalmers JR, Bobek MB, Militello MA. Visual compatibility of amiodarone hydrochloride injection with various intravenous drugs. Am J Health-Syst Pharm 2001 ; 58: 504-506.
1757	Revue	Schrijvers D, Tai-Apin C, De Smet MC, Cornil P, Vermorcken JB, Bruyneel P. Determination of compatibility and stability of drugs used in palliative care. J Clin Pharm Ther 1998 ; 23: 311-314.
1803	Revue	Trissel, LA, Saenz CA, Ogundele OB, Ingram D, Baker MB. Compatibility of fenoldopam mesylate with other drugs during simulated Y-site administration. Am J Health-Syst Pharm 2003 ; 60: 80-85.
1944	Revue	Hartman CA, Faria CE, Mago K. Visual compatibility of bivalirudin with selected drugs. Am J Health-Syst Pharm 2004 ; 61: 1774.
1964	Revue	Hartman CA, Baroletti SA, Churchill WW et al. Visual compatibility of argatroban with selected drugs. Am J Health-Syst Pharm 2002 ; 59: 1784-1785.

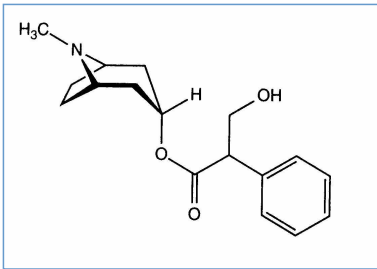
1974	Revue	Chandler SW, Trissel LA, Weinstein SM Combined administration of opioids with selected drugs to manage pain and other cancer symptoms initial safety screening for compatibility. J Pain Symptom Manage 1996 ; 12, 3: 168-171.
2090	Revue	Pere H, Chasse V, Forest JM, Hildgen P. Compatibility of injectable pantoprazole in Y-site administration. Pharmactuel 2004 ; 37: 193-196.
2109	Revue	Pelletier E, Forest JM, Hildgen P. Compatibilité de la kétamine injectable lors de l'administration en dérivé avec d'autres médicaments usuels. Pharmactuel 2006 ; 39: 71-75.
2262	Revue	Brammer MK, Chan P, Heatherly K, Trusley C, Kupiec TC, Trissel LA, Psathas PA, Gilmor T, Schaufelberger D. Compatibility of doripenem with other drugs during simulated Y-site administration Am J Health-Syst Pharm 2008 ; 65: 1261-1265.
2279	Revue	Kupiec T, Trusley C, Ben M, Trissel LA. Physical and chemical stability of palonosetron hydrochloride with five common parenteral drugs during simulated Y-site administration. Am J Health-Syst Pharm 2008 ; 65, 18: 1735-1759.
2297	Revue	Donnelly R.F, Corman C. Physical compatibility and chemical stability of a concentrated solution of atropine sulfate (2 mg/ml) for use as an antidote in nerve agent casualties. Int J Pharm Compound 2008 ; 11, 6: 550-552
3012	Revue	Sullivan T, Forrest J.M, Leclair G. Compatibility of Cloxacillin Sodium with Selected Intravenous Drugs During Simulated Y-Site Administration Hosp Pharm 2015 ; 50, 3: 214-220.
3372	Revue	Hanci V, Ali Kiraz H, Ömür D, Ekin S, Uyan B, Yurtlu B.S. Precipitation in Gallipoli: Sugammadex / Amiodarone & Sugammadex / Dobutamine & Sugammadex / Protamine. Rev Bras Anesthesiol 2013 ; 63, 1: 163-166.
3408	Revue	Tollec S, Touzin K, Pelletier E, Forest J.M. Evaluation visuelle de la compatibilité physique de la naloxone avec d'autres médicaments intraveineux usuels. Pharmactuel 2013 ; 46, 1 : 16-21.
3578	Laboratoire	Cisplatine - Summary of Product Characteristics Accord Healthcare 2011
3644	Laboratoire	Calcium gluconate® - Summary of Product Characteristics Hameln Pharmaceuticals 2010
3766	Revue	Forrest J.M, Hildgen P. Compatibilité de l'acétylcystéine injectable lors de son administration en Y avec d'autres médicaments usuels Pharmactuel 2014 ; 47, 3 : 161-165.
3824	Revue	Boudi S, Roy H, Forest JM, Leclair G. Compatibilité physique de l'association amoxicilline-acide clavulanique en injection avec plusieurs autres médicaments lors d'une administration en Y. Pharmactuel 2023 2023;56,3:91-98
3932	Laboratoire	Hydroxocobalamine (Cyanokit®) - Résumé des caractéristiques du produit Serb Laboratoire 2015
3934	Laboratoire	Eptifibatide (Integrilin®) - Résumé des caractéristiques du produit GlaxoSmithKline Laboratoire 2016
3964	Revue	Audet M.A, Forest E, Friciu M, Forest J.M, Leclair G. Compatibilité du citrate de caféine injectable avec plusieurs autres médicaments. Pharmactuel 2017 ; 50,1 : 27-33.
4319	Revue	Lessard J-J, Caron E, Schérer H, Forest J-M, Leclair G. Compatibility of Y-site Injection of Meropenem Trihydrate With 101 Other Injectable Drugs. Hosp Pharm 2020 ; 55, 5: 332-337.

4603	Revue	Vallée M, Barthélémy I, Friciu M, Pelletier E, Forest J.M, Benoit F, Leclair G. Compatibility of Lactated Ringer's Injection With 94 Selected Intravenous Drugs During Simulated Y-site Administration. Hosp Pharm 2021 ; 56, 4: 228-234.
4742	Revue	Macoviciuc M, Nguyen C, Forest J-M, Leclair G. Compatibilité physique de l'acétaminophène injectable avec 102 autres médicaments lors d'une administration en Y. Pharmactuel 2022 ; 55, 4: 247-255.





Stabilis



Atropine sulfate



Compatibilités

			
	Atropine sulfate Salbutamol sulfate	∅	549



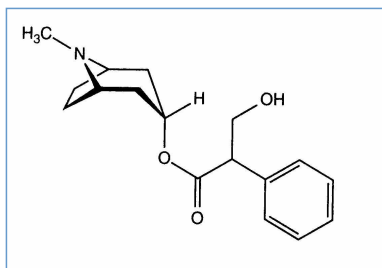
Bibliographie

	Type	Source
549	Revue	Owsley HD, Rusho WJ. Compatibility of common respiratory therapy drug combinations. Int J Pharm Compound 1997 ; 1: 121-122.

Stabilis



Atropine sulfate



Stabilité des préparations

0,5 mg Nitten Atropine Ophtalmic 1%®		NaCl 0.9% 5 mL	23-27°C		180			4368
5 mg Nitten Atropine Ophtalmic 1%®		NaCl 0.9% 5 mL	23-27°C		180			4368
10,5 mg Nitten Atropine Ophtalmic 1%®		NaCl 0.9% 5 mL	23-27°C		180			4368
25 mg Nitten Atropine Ophtalmic 1%®		NaCl 0.9% 5 mL	23-27°C		180			4368
		0,6 mg NaH ₂ PO ₄ 46,8 mg Na ₂ HPO ₄ 26,88 mg Cétrimide 0,6 mg NaCl 0.9% >> 6 mL	23-27°C		180			4472
		0,6 mg NaH ₂ PO ₄ 46,8 mg Na ₂ HPO ₄ 26,88 mg NaCl 0.9% >> 6 mL	23-27°C		180			4472
0,5 mg Nitten Atropine Ophtalmic 1%®		NaCl 0.9% 5 mL	4-6°C		180			4368
5 mg Nitten Atropine Ophtalmic 1%®		NaCl 0.9% 5 mL	4-6°C		180			4368
10,5 mg Nitten Atropine Ophtalmic 1%®		NaCl 0.9% 5 mL	4-6°C		180			4368
25 mg Nitten Atropine Ophtalmic 1%®		NaCl 0.9% 5 mL	4-6°C		180			4368




Bibliographie

	Type	Source
4368	Revue	Saito J, Imaizumi H, Yamatani A. Physical, chemical, and microbiological stability study of diluted atropine eye drops. J Pharm Health Care Sci 2019 ; 5: 25.
4472	Revue	Berton B, Chennell P, Yessaad M, Bouattour Y, Jouannet M, Wasiak M, Sautou V. Stability of Ophthalmic Atropine Solutions for Child Myopia Control. Pharmaceutics 2020 ;12, 781



Dictionnaire

 Antimuscarinique	 Injectable
 Noms commerciaux	 Stabilité des solutions
 Contenant	 Molécule
 Concentration	 Température
 Conservation	 Durée de stabilité
 Biosimilaire	 Données conflictuelles
 Bibliographie	 Seringue polypropylène
 Chlorure de sodium 0,9%	 Lumière
 Jour	 A l'abri de la lumière
 Stabilité en mélange	 Solvant
 Molécule	 Verre
 NaCl 0,9% ou glucose 5%	 Heure
 Glucose 5%	 Polypropylène
 Compatibilités	 Compatible
 Aucun	 Instabilité chimique
 Incompatible	RL Ringer lactate
 Incompatibilité non précisée	 Eau pour préparation injectable
 Précipitation en 24 heures	 Voie d'administration
 Intraveineuse	 Intramusculaire
 Sous cutanée	 Bibliographie
 Aérosol	 Collyre
 Stabilité des préparations	 Origine
 Excipient	 Flacon plastique
 Spécialité pharmaceutique	 Poudre
 Dictionnaire	