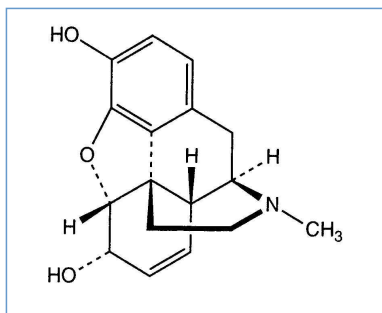


Stabilis



Morphine hydrochloride



Noms commerciaux

Amidiaz	Argentine
Analfin	Mexique
Morfin	Norvège, Suède
Morfina clorhidrato	Chili, Equateur, Italie, Pérou
Morfine	Pays bas
Morphin	Finlande
Morphine	Belgique, France
Stellorphine	Belgique
Vendal	Autriche



Stabilité des solutions

		30 mg/ml	22°C		90			1062
		30 mg/ml	22°C		90			1062
		2 mg/ml	25°C		6			515
		2 mg/ml	40°C		6			515
		1 mg/ml	37°C		14			1264
		0,5 >> 2,5 mg/ml	32°C		60			679
		25 mg/ml	22°C		7			4664
		25 mg/ml	37°C		7			4664
		20 mg/ml	37°C		14			1264
		1 mg/ml	-20°C		90			3572
		1 mg/ml	2-8°C		58			3572
		30 mg/ml	22°C		90			1062
		1 mg/ml	37°C		2			1264
		30 mg/ml	22°C		90			1062

		0.33 mg/ml	2-8°C		730			3415
		0.33 mg/ml	22°C		730			3415
		1 mg/ml	2-8°C		58			3572
		2 mg/ml	25°C		6			515
		2 mg/ml	40°C		6			515
		20 mg/ml	37°C		2			1264
		2,5 & 5 mg/ml	25°C		30			219
		10 mg/ml	37°C		56			1842



Stabilité en mélange

		0,2 mg/ml	20°C-25°C		Bupivacaine hydrochloride : 7,5 mg/ml	540		1885
		0,25 mg/ml	25°C		Hydromorphone hydrochloride : 0,05 mg/ml	15		4667
		0,25 mg/ml	37°C		Hydromorphone hydrochloride : 0,05 mg/ml	15		4667
		6,66 mg/ml	25°C		Bupivacaine hydrochloride : 3 mg/ml Clonidine hydrochloride : 0,03 mg/ml	90		346
		25 mg/ml	22°C		Esketamine : 20 mg/ml Metamizol sodium : 50 mg/ml	7		4664
		25 mg/ml	22°C		Metamizol sodium : 50 mg/ml	7		4664
		0,25 mg/ml	25°C		Hydromorphone hydrochloride : 0,05 mg/ml	15		4667
		0.2 >> 18 mg/ml	37°C		Haloperidol lactate : 0.02 >> 0.2 mg/ml	7		2362
		0,25 mg/ml	37°C		Hydromorphone hydrochloride : 0,05 mg/ml	15		4667
		0,25 mg/ml	25°C		Hydromorphone hydrochloride : 0,05 mg/ml	15		4667
		0,25 mg/ml	37°C		Hydromorphone hydrochloride : 0,05 mg/ml	15		4667
		1 mg/ml	2-8°C		Baclofen : 0.08 mg/ml	7		4051
		10 mg/ml	2-8°C		Baclofen : 1.6 mg/ml	7		4051
		10 mg/ml	23-27°C		Baclofen : 1.6 mg/ml	7		4051
		1 mg/ml	23-27°C		Baclofen : 0.08 mg/ml	7		4051
		1,67>> 10 mg/ml	25°C		Scopolamine N-butyl bromide : 5 & 6,67 mg/ml Haloperidol lactate : 0,42 & 0,62 mg/ml	15		2055
		1,67>> 10 mg/ml	25°C		Scopolamine N-butyl bromide : 3,33>>6,67 mg/ml	15		1966
		1,67>> 10 mg/ml	4°C		Scopolamine N-butyl bromide : 3,33>>6,67 mg/ml	15		1966
		0.2 >> 18 mg/ml	2-8°C		Haloperidol lactate : 0.02 >> 0.2 mg/ml	14		2362
		0.2 >> 18 mg/ml	37°C		Haloperidol lactate : 0.02 >> 0.2 mg/ml	7		2362

EVA	∅	2,5 >> 5 mg/ml	2-8°C	?	Metamizol sodium : 250 mg/ml	21	◐	2363
EVA	∅	2,5 >> 5 mg/ml	2-8°C	?	Metamizol sodium : 200 mg/ml	21	◐	2363
EVA	∅	10 mg/ml	2-8°C	?	Metamizol sodium : 100 mg/ml	21	◐	2363
EVA	∅	10 mg/ml	2-8°C	?	Metamizol sodium : 200 mg/ml	21	◐	2363
EVA	∅	10 >> 20 mg/ml	2-8°C	?	Metamizol sodium : 66,67 mg/ml	21	◐	2363
EVA	∅	35 mg/ml	2-8°C	?	Metamizol sodium : 43 mg/ml	21	◐	2363
EVA	∅	35 mg/ml	2-8°C	?	Metamizol sodium : 58 mg/ml	21	◐	2363
EVA	∅	2,5 >> 5 mg/ml	37°C	?	Metamizol sodium : 200 mg/ml	3	◐	2363
EVA	∅	2,5 >> 5 mg/ml	37°C	?	Metamizol sodium : 250 mg/ml	3	◐	2363
EVA	∅	10 mg/ml	37°C	?	Metamizol sodium : 200 mg/ml	3	◐	2363
EVA	∅	10 mg/ml	37°C	?	Metamizol sodium : 100 mg/ml	3	◐	2363
EVA	∅	10 mg/ml	37°C	?	Metamizol sodium : 100 mg/ml	3	◐	2363
EVA	∅	10 >> 20 mg/ml	37°C	?	Metamizol sodium : 66,67 mg/ml	4	◐	2363
EVA	∅	35 mg/ml	37°C	?	Metamizol sodium : 58 mg/ml	7	◐	2363
EVA	∅	35 mg/ml	37°C	?	Metamizol sodium : 43 mg/ml	7	◐	2363
PP	▲	0,417 mg/ml	2-8°C	?	Clonidine hydrochloride : 0,003 mg/ml	30	◐	4643
PP	▲	4,3 mg/ml	2-8°C	?	Clonidine hydrochloride : 0,032 mg/ml	30	◐	4643



Facteur influençant la stabilité

-	+	↓ >30 mg/ml	→	↓	1062
---	---	-------------	---	---	------



Compatibilités

	Morphine hydrochloride : 2 mg/ml Alprostadil : 20 µg/ml	◆	4651
	Morphine hydrochloride : 2.5 >> 15 mg/ml Atropine sulfate : 0.5 mg/ml	💧	1757
		▲	3976
	Morphine hydrochloride : 0,2 mg/ml Bupivacaine hydrochloride : 7,5 mg/ml	▲	1885
	Morphine hydrochloride : 1 mg/ml Clonidine hydrochloride : 0.0075 mg/ml	▲◆	1506
	Morphine hydrochloride : 1.68 & 5 mg/ml Dexamethasone sodium phosphate : 0.44 & 1.33 mg/ml	▲	1971

		Morphine hydrochloride : 1 >> 50 mg/ml Dexamethasone sodium phosphate : 0.5 >> 20 mg/ml		1866
		Morphine hydrochloride Diclofenac		3470
		Morphine hydrochloride : 1 mg/ml Dobutamine hydrochloride : 8 mg/ml		1506
		Morphine hydrochloride : 1 mg/ml Dopamine hydrochloride : 8 mg/ml		1506
		Morphine hydrochloride : 15 mg/ml Doripenem : 5 mg/ml		2262
		Morphine hydrochloride Eptifibatide		3934
		Morphine hydrochloride : 1 mg/ml Esomeprazole sodium : 0.32 mg/ml		1506
		Morphine hydrochloride Fluorouracil		3474
		Morphine hydrochloride : 1 mg/ml Glycerophosphate disodium		4332
		Morphine hydrochloride : 3 > 50 mg/ml Haloperidol lactate : 4 mg/ml		1866
		Morphine hydrochloride : 2 > 50 mg/ml Haloperidol lactate : 5 mg/ml		1866
		Morphine hydrochloride : 1.68 & 5 mg/ml Haloperidol lactate : 0.21 & 0.62 mg/ml		1971
		Morphine hydrochloride : 15 > 50 mg/ml Haloperidol lactate : 2 mg/ml		1866
		Morphine hydrochloride : 5 > 50 mg/ml Haloperidol lactate : 3 mg/ml		1866
		Morphine hydrochloride : 2 >> 5 mg/ml Haloperidol lactate : 0.25 >> 0.5 mg/ml		4404
		Morphine hydrochloride : 1 mg/ml Haloperidol lactate : 5 mg/ml		1866
		Morphine hydrochloride : 1 & 2 mg/ml Haloperidol lactate : 4 mg/ml		1866
		Morphine hydrochloride : 1 >> 3 mg/ml Haloperidol lactate : 3 mg/ml		1866
		Morphine hydrochloride : 1 >> 10 mg/ml Haloperidol lactate : 2 mg/ml		1866
		Morphine hydrochloride : 1 >> 20 mg/ml Haloperidol lactate : 1 mg/ml		1866
		Morphine hydrochloride : 2.5 >> 15 mg/ml Haloperidol lactate : 2.5 mg/ml		1757
		Morphine hydrochloride : 0.2 >> 18 mg/ml Haloperidol lactate : 0.02 >> 0.2 mg/ml		2362
		Morphine hydrochloride : 1 mg/ml Insulin aspart : 1 UI/ml		1508
		Morphine hydrochloride : 1,3 >> 3 mg/ml Ketorolac tromethamine : 3,4 >> 4 mg/ml		3169
		Morphine hydrochloride : 4.7 mg/ml Ketorolac tromethamine : 1.76 mg/ml		3470
		Morphine hydrochloride : 1.18 >> 3.53 mg/ml Ketorolac tromethamine : 1.76 & 3.53 mg/ml		3470

	Morphine hydrochloride : 2 >> 5 mg/ml Levomepromazine : 0.625 >> 2.5 mg/ml		4404	
	Morphine hydrochloride : 1 mg/ml Lorazepam : 0.33 mg/ml		186	
	Morphine hydrochloride : 0.3 mg/ml Lornoxicam : 0.4 mg/ml		4034	
		Morphine hydrochloride : 10 >> 50 mg/ml Methylprednisolone sodium succinate : 0.1 >> 9 mg/ml		1866
	Morphine hydrochloride : <10 mg/ml Methylprednisolone sodium succinate : 0.1 >> 9 mg/ml		1866	
	Morphine hydrochloride : 2 >> 5 mg/ml Metoclopramide hydrochloride : 3 mg/ml		4404	
	Morphine hydrochloride : 1.68 & 5 mg/ml Metoclopramide hydrochloride : 1.11 & 3.33 mg/ml		1971	
	Morphine hydrochloride : 1.67 >> 10 mg/ml Metoclopramide hydrochloride : 3.33 mg/ml		1757	
	Morphine hydrochloride : 2 >> 5 mg/ml Midazolam hydrochloride : 1.2 mg/ml		4404	
	Morphine hydrochloride : 1 mg/ml Midazolam hydrochloride : 5 mg/ml		186	
	Morphine hydrochloride : 1.68 & 5 mg/ml Midazolam hydrochloride : 0.5 & 1.5 mg/ml		1971	
		Morphine hydrochloride : > 40 mg/ml Midazolam hydrochloride : 1 >> 3 mg/ml		1866
	Morphine hydrochloride : 10 >> 40 mg/ml Midazolam hydrochloride : 1 >> 3 mg/ml		1866	
		Morphine hydrochloride : > 30 mg/ml Midazolam hydrochloride : > 4 mg/ml		1866
	Morphine hydrochloride : 2 mg/ml Nafamostat : 10 mg/mL		4545	
	Morphine hydrochloride : 1 mg/ml Norepinephrine bitartrate : 0.32 mg/ml		1506	
		Morphine hydrochloride Parecoxib sodium		3504
	Morphine hydrochloride : 0,08 & 0,2 mg/ml Pentoxifyllin : 5 mg/ml		4538	
	Morphine hydrochloride : 0,02 mg/ml Pentoxifyllin : 5 mg/ml		4543	
	Morphine hydrochloride : 10 mg/ml Phloroglucinol : 2,5 mg/ml		3791	
	Morphine hydrochloride : 15 mg/ml Potassium chloride : 40 mEq/l		1228	
	Morphine hydrochloride : 15 mg/ml Potassium chloride : 40 mEq/l	RL	1228	
	Morphine hydrochloride : 1 mg/ml Quinupristine/dalfopristine : 2 mg/ml		1513	
	Morphine hydrochloride : 1.67 >> 10 mg/ml Ranitidine hydrochloride : 16.67 mg/ml		1757	
	Morphine hydrochloride : 10 mg/ml Remdesivir : 1 mg/ml		4768	
	Morphine hydrochloride : 2.5 >> 15 mg/ml Scopolamine N-butyl bromide : 10 mg/ml		1757	

	Morphine hydrochloride : 1.68 & 5 mg/ml Scopolamine N-butyl bromide : 1.68 & 5 mg/ml		1971
	Morphine hydrochloride : 1.67 >> 10 mg/ml Scopolamine N-butyl bromide : 3.33 >> 6.67 mg/ml		1966
	Morphine hydrochloride : 2 >> 5 mg/ml Scopolamine N-butyl bromide : 3-7 mg/ml		4404
	Morphine hydrochloride Thiopental sodium		3675
	Morphine hydrochloride Tigecycline		3332



Voie d'administration



Bibliographie

	Type	Source
186	Revue	Swart EL, Mooren RAG, Van Loenen AC. Compatibility of midazolam hydrochloride and lorazepam with selected drugs during simulated Y-site administration. Am J Health-Syst Pharm 1995 ; 52: 2020-2022.
219	Revue	Oustric-Mendes AC, Huart B, Le Hoang MD, Perrin-Rosset M, Paillet FM, Darbord JC, Prognon, Gard C, Pradeau D. Study protocol : stability of morphine injected without preservative, delivered with a disposable infusion device. J Clin Pharm Ther 1997 ; 22: 283-290.
346	Revue	Wulf H, Gleim M, Mignat C. The stability of mixtures of morphine hydrochloride, bupivacaine hydrochloride, and clonidine hydrochloride in portable pump reservoirs for the management of chronic pain syndromes. J Pain Symptom Manage 1994 ; 9: 308-311.
515	Revue	Le Hoang MD, Sarbach C, Prognon P, Delvordre P, Mignot A, Pradeau D. Stability of morphine hydrochloride solutions in portable single-use PCA systems. Additives leaching into the morphine solutions. J Pharm Clin 1998 ; 17: 35-39.
679	Revue	Roos PJ, Glerum JH, Meilink JW. Stability of morphine hydrochloride in a portable pump reservoir. Pharm Weekbl [Sci] 1992 ; 14: 23-26.
1062	Revue	Vermeire A, Remon JP. The stability of morphine and the stability of concentrated morphine solutions in glass, polypropylene syringes and PVC containers. Int J Pharm 1997 ; 146: 213-223.
1228	Revue	Allen LV, Stiles ML. Compatibility of various admixtures at Y-injection sites of intravenous administration sets. Part2. Am J Hosp Pharm 1981 ; 38: 380-381.
1264	Revue	Truelle-Hugon B, Tourette G, Couineaux B, Gache-Charrette C. Study of Lavoisier morphine chlorhydrate in different active perfusion systems after reconstitution in different solvents. Ann Pharm Fr 1997 ; 55: 216-223.

1506	Revue	Lopez-Cabezas C, Guerrero L, Molas G, Anglada H, Soy D. Physicochemical compatibility of high concentration drugs usually Y-site administered in intensive care units. EJHP 2015 ;22:107-112.
1508	Revue	Voirol P, Berger-Gryllaki M, Pannatier A, Eggimann P, Sadeghipour F. Visual compatibility of insulin aspart with intravenous drugs frequently used in ICU. EJHP 2015 ;22:123-124.
1513	Laboratoire	Quinupristine / dalfopristine (Synercid®) - Résumé des caractéristiques du produit Monarch Pharmaceuticals Ireland 2006
1757	Revue	Schrijvers D, Tai-Apin C, De Smet MC, Cornil P, Vermorken JB, Bruyneel P. Determination of compatibility and stability of drugs used in palliative care. J Clin Pharm Ther 1998 ; 23: 311-314.
1842	Revue	Sadjack A, Wintersteiger R. Compatibility of morphin, baclofen, floxuridine and fluorouracil in an implantable infusion pump. Arzneimittel Forschung 1995 ; 45: 93-98.
1866	Revue	Vermeire A, Remon JP. Compatibility and stability of morphine in binary admixtures with haloperidol, midazolam, dexamethasone or methylprednisolone. Int J Pharm 1998 ; 174: 157-177.
1885	Revue	Essink-Tjebbes CM, Burger DM, Beelen, Wuis EW, Heckster YA. Long-term stability of morphine and bupivacaine mixture for spinal use. Pharm World Sci 1999 ; 21: 144-146.
1966	Revue	Barcia E, Reyes R, Azuara L, Sánchez Y, Negro S. Stability and compatibility of binary mixtures of morphine hydrochloride with hyoscine-n-butyl bromide. Support Care Cancer 2005 ; 13, 4: 239-245.
1971	Revue	Azuara ML, Sanchez Y, Reyes R, Barcia E. Physical compatibility and in vivo evaluation of drug mixtures for subcutaneous infusion to cancer patients in palliative care. Support Care Cancer 2001
2055	Revue	Negro S, Reyes R, Azuara ML, Sanchez Y, Barcia E. Morphine, haloperidol and hyoscine N-butyl bromide combined in sc infusion solutions : compatibility and stability evaluation in terminal oncology patients. Int J Pharm 2006 ; 307: 278-284.
2262	Revue	Brammer MK, Chan P, Heatherly K, Trusley C, Kupiec TC, Trissel LA, Psathas PA, Gilmor T, Schaufelberger D. Compatibility of doripenem with other drugs during simulated Y-site administration Am J Health-Syst Pharm 2008 ; 65: 1261-1265.
2362	Poster	Trittler R, Müller S, Esteban M. Morphin-Haloperidol mischungen in PCA Pumpen : Kompatibel? ADKA Congress 2009 2009
2363	Poster	Müller S, Trittler R, Schubert R, von Hornstein W.F, Strehl E. Morphin-Metamizol mischungen zur kontinuierlichen parenteralen applikation : Sind sie immer inkompatibel? ADKA Congress 2006
3169	Revue	Raffaelli W, Pari G, Visani L et al. Experimentation about precipitation of pharmacological association: morphine and ketorolac. Pain Clinic 1999 ; 11: 213-216.
3332	Laboratoire	Tigecycline (Tigacyl®) - Summary of Product characteristics Pfizer 2012
3415	Revue	d'Hayer B, Vieillard V, Astier A, Paul M Stability-Indicating HPLC Assay and Stability Study Over Two Years of Morphine Hydrochloride Diluted Solutions in Polypropylene Syringes Pharmaceut Anal Acta 2013 ; 4: 205

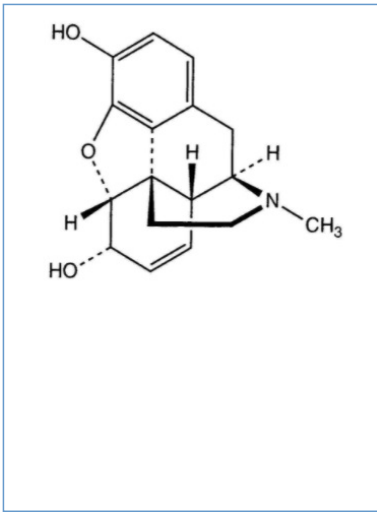
3470	Revue	Destro M, Ottolini L, Vicentini L, Boschetti S. Physical compatibility of binary and tertiary mixtures of morphine and methadone with other drugs for parenteral administration in palliative care. Support Care Cancer 2012 ; 20: 2501-2509.
3474	Laboratoire	Fluorouracil - Summary of Product Characteristics Accord Healthcare Limited 2009
3504	Laboratoire	Parecoxib (Dynastat®) - Summary of Product Characteristics Pfizer 2012
3572	Revue	Hecq J-D, Godet M, Gillet P, Jamart J, Galanti L. Long-term Stability of Morphine Hydrochloride in 0.9% NaCl Infusion Polyolefin Bags After Freeze-thaw Treatment and in Polypropylene Syringes at 5°C ± 3°C. Int J Pharm Compound 2014 ; 18, 1 : 78-82.
3675	Laboratoire	Thiopental sodium - Summary of Product Characteristics Archimedes Pharma UK Ltd 2015
3791	Poster	Sadou Yaye H, Burtet E, Hamel C, Aljehni R, Gard C, Tilleul P. Étude de la compatibilité physico-chimique du phloroglucinol injectable durant les mélanges au sein des tubulures en Y. Apifh Congress, Paris November 2014 2014
3934	Laboratoire	Eptifibatide (Integrilin®) - Résumé des caractéristiques du produit GlaxoSmithKline Laboratoire 2016
3976	Revue	Du Repaire T, Vigne P, Guedon A, Gauthier-Villano L, Bertault Peres P, Pourroy B. Visual compatibility of blinatumomab with selected co-administrated drugs during simulated Y-site administration. Am J Health-Syst Pharm 2017 ; 74,16 : 1217-1218
4034	Revue	Chen F-C, Fang B-X, Li P, Zheng F, Shi X-Y. Compatibility and stability of lornoxicam with morphine, tramadol or fentanyl in infusion solutions. Afr J Pharm Pharmacol 2012 ;27,6:2055-2060
4051	Revue	Robert J, Sorrieul J, Kieffer H, Folliard C, Gibory V, Dupoirion D, Devys C. Stability study of morphine and baclofen solution in polypropylene syringes. Pharmaceutical Technology in Hospital Pharmacy 2017 ;2,4:173-180
4332	Poster	Compatibilité de Glycophos® avec d'autres médicaments administrés en perfusion aux soins intensifs (SI) Compatibilité de Glycophos® avec d'autres médicaments administrés en perfusion aux soins intensifs (SI). JFSPH 2019 2019
4404	Poster	Müller U, Haller F, Wiedemeier P, Steuer C. Compatibility studies of seven commonly used drugs for parenteral administration in palliative care. JFSPH 2019 2019
4538	Revue	Campbell A, Petrovski M, Senarathna G, Mukadam ,Strunk T, Batty K. Compatibility of pentoxifylline and parenteral medications. Archives of Disease in Childhood 2020 ; 105: 395-397.
4543	Revue	Senarathna G, Strunk T, Petrovski M, Batty K. Physical compatibility of pentoxifylline and intravenous medications. Archives of Disease in Childhood 2018 ;104:292–295.
4545	Revue	Kondo M, Nagano M, Yoshida M, Yoshida N, Tagui N, Yoshida M, Sugaya K, Takase H. Physical compatibility of nafamostat with analgesics, sedatives, and muscle relaxants for coronavirus disease treatment. Journal of Nippon Medical school 2021
4643	Revue	Catry E, Colsoul M-L, Closset M, Nyssen C, Hubert J, Soumoy L, Bihin B, Jamart J, Hecq J-D, Galanti L. Evaluation of 30-day stability of morphine hydrochloride and clonidine at high and low concentrations in polypropylene syringes. EJHP 2021
4651	Revue	De Basagoiti A, Katsumiti A, Abascal S, Bustinza A, López-Giménez L.R, Pascual P, De Miguel M, Campino A. Physical compatibility of alprostadil with selected drugs commonly used in the neonatal intensive care units. Eur J Pedia 2021 ;180,1169–1176.

4664	Revue	Harder M, Fiegl-Lechner A, Oberacher H, Horvath U.E.I, Schlager A, Jeske M, Kerndler S, Schüllner F, Bonn G.F, Rainer M. Stability evaluation of morphine, hydromorphone, metamizole and esketamine containing analgesic mixtures applied for patient-controlled analgesia in hospice and palliative care. Biomed Chromatogr 2022 ;e5340.
4667	Revue	Ping L, Juan H, Li R-L, Feng Z-Y, Zhou X-J, Liu M-F, Jing B, Jian L. Stability of Hydromorphone Hydrochloride and Morphine under Different Clinical Infusion Conditions. Int J Pharm Pharm Sci 2019 ;81(6):1140-114
4768	Revue	Kondo M, Genpei M, Watanabe K, Yoshida M, Tagui N, Fukao S, Sugaya K, Takase H. Y-site injection physical compatibility of remdesivir with select intravenous drugs used in palliative care and for treating coronavirus disease 2019. Journal of Nippon Medical school 2023

Stabilis



Morphine hydrochloride



Stabilité des préparations

		25 mg ® = ?	Poloxamer® 407 1,1 g Glycérine 1 g Carboxymethylcellulose sodique 3,75 mg Eau ppi >> 5g	15-25°C		1095		4653



Bibliographie

	Type	Source
4653	Revue	Jansen MMPM, van Waas VPH, Verzijl JM, Burger D. Development of a sterile morphine hydrogel for the local treatment of painful skin ulcers. EJHP 2021 ; 28: 331-335.



Dictionnaire

 Antalgique	 Injectable
 Noms commerciaux	 Stabilité des solutions
 Contenant	 Molécule
 Concentration	 Température
 Conservation	 Durée de stabilité
 Biosimilaire	 Données conflictuelles
 Bibliographie	 Verre
 Eau pour préparation injectable	 A l'abri de la lumière
 Jour	 NaCl 0,9% ou glucose 5%
 Chlorure de sodium 0,9%	 Polyvinyl chlorure
 Non précisée	 Aucun
 Polyolefine	 Seringue polypropylène
 Elastomère en polyisoprène	 Non précisé
 Stabilité en mélange	 Solvant
 Molécule	 Lumière
 Polyéthylène	 Polypropylène
 Ethylène vinyl acétate	 Facteur influençant la stabilité
 Diminution	 Provoque
 Précipitation	 Compatibilités
 Compatible	 Glucose 5%
 Précipitation immédiate	 Incompatible
 Incompatibilité non précisée	RL Ringer lactate
 Voie d'administration	 Intraveineuse
 Perfusion intraveineuse	 Perfusion continue
 Intramusculaire	 Sous cutanée
 Perfusion SC continue	 Bibliographie
 Forme dermique	 Stabilité des préparations
 Origine	 Excipient
 Poudre	 Dictionnaire