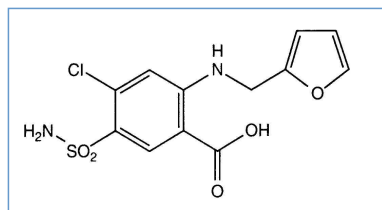


Stabilis



Furosemide



Noms commerciaux

Asadiur	Mexique
Demistec	Mexique
Desal	Turquie
Diorin	Colombie
Diural	Danemark, Norvège
Diurapid	Allemagne
Diurefur	Pérou
Diuresal	Suisse
Edemid	Croatie, Slovénie, Vénézuéla
Edenol	Mexique
Frusemide	Australie, Irlande, Nouvelle Zélande
Frusix	Vénézuéla
Furesis	Finlande
Furilan	Maroc, Tunisie
Furital	Argentine
Furix	Danemark, Islande, Norvège, Suède
Furodiurol	Mexique
Furohexal	Autriche
Furomid	Turquie
Furon	Autriche, Hongrie
Furophax	Pérou
Furorese	Allemagne, Luxembourg
Furosan	Mexique
Furoxem	Tunisie
Fursemid	Allemagne
Hydroflux	Grèce
Impugan	Suède
Kolkin	Argentine
Lasilix	Etats Unis d'Amérique, France, Hongrie, Japon, Maroc, Pologne, Tunisie
Lasiphar	Egypte
Lasix	Afrique du sud, Allemagne, Arabie Saoudite, Argentine, Australie, Autriche, Belgique, Brésil, Chili, Colombie, Egypte, Grande Bretagne, Grèce, Italie, Luxembourg, Mexique, Nouvelle Zélande, Pays bas, Portugal, Suisse, Turquie
Nacua	Vénézuéla
Oedemex	Suisse
Salex	Egypte

Salurin	Arabie Saoudite, Emirats Arabes Unis
Seguril	Espagne
Uradex	Turquie
Urever	Turquie



Stabilité des solutions

PVC		1,2 > 3,2 mg/ml	22°C		84			1680
PVC		1,2 > 3,2 mg/ml	22°C		7			1680
PVC		1,2 > 3,2 mg/ml	6°C		84			1680
PE		1,0 > 8,0 mg/ml	22°C		84			1680
PE		1,0 > 8,0 mg/ml	22°C		7			1680
PE		1,0 > 8,0 mg/ml	6°C		84			1680
PE		5 mg/ml	20°C		24			4341
PE		5 mg/ml	4°C		35			4341
PE		1 mg/ml	25°C		96			3821



Stabilité en mélange

		0,5 & 10 mg/ml	20°C-25°C		Tirofiban : 50 µg/ml	4	
		0,2 mg/ml	20°C-23°C		Granisetron hydrochloride : 0,5 mg/ml	4	
		1.07 mg/ml	25°C		Human albumin : 250 mg/ml	48	
		1.07 mg/ml	4°C		Human albumin : 250 mg/ml	14	

		3.33>>10 mg/ml	25°C		Dexamethasone sodium phosphate : 0.33>>3.33 mg/		2205
		3.33>>10 mg/ml	5°C		Dexamethasone sodium phosphate : 0.33>>3.33 mg/		2205
		1 mg/ml	25°C		Chlorothiazide sodium : 10 mg/ml	96	3821
		0,2 mg/ml	25°C		Cefoperazone sodium : 10 mg/ml	2	87
		0,2 mg/ml	4°C		Cefoperazone sodium : 10 mg/ml	5	87



Facteur influençant la stabilité

				796 1855
				3639
				301
	PH < 5,5			1289



Compatibilités

	Furosemide : 3 mg/ml Allopurinol sodium : 3 mg/ml		307
	Furosemide : 5 mg/ml Alprostadil : 20 µg/ml		4651
	Furosemide : 5 mg/ml Alprostadil : 15 µg/ml		3201
	Furosemide : 10 mg/ml Alprostadil : 1 µg/ml		4570
	Furosemide : 5 mg/ml Alprostadil : 20 µg/ml		4491
	Furosemide : 3 mg/ml Amifostine : 10 mg/ml		3
			367
			3210
			1232
			3465
			3464
	Furosemide : 0.2 mg/ml Amiodarone hydrochloride : 1.8 mg/ml		242
			3639
	Furosemide : 1 mg/ml Aminophylline : 1 mg/ml		1232

		Furosemide : 10 mg/ml Amiodarone hydrochloride : 15 mg/ml		3463
		Furosemide : 5 mg/ml Amiodarone hydrochloride : 18 mg/ml		4698
		Furosemide : 10 mg/ml Amiodarone hydrochloride : 15 mg/ml		3134
		Furosemide : 10 mg/ml Amiodarone hydrochloride : 6 mg/ml		1611
		Furosemide : 10 mg/ml Amiodarone hydrochloride : 15 mg/ml		3823
		Furosemide : 10 mg/ml Amoxicillin sodium / clavulanic acid : 100/10 mg/ml		3824
		Furosemide : 3 mg/ml Amphotericin B cholesteryl sulfate complex : 0.83 mg/ml		921
		Furosemide : 1 mg/ml Ampicillin sodium : 20 mg/ml		1232
		Furosemide : 3 mg/ml Amsacrine : 1 mg/ml		253
		Furosemide : 3 mg/ml Anidulafungin : 0.5 mg/ml		1982
		Furosemide : 10 mg/ml Argatroban : 1 mg/ml		1963
		Furosemide : 1 mg/ml Atropine sulfate : 0,06 mg/ml		1232
		Furosemide : 10 mg/ml Azithromycine : 2 mg/ml		1800
		Furosemide : 3 mg/ml Aztreonam : 40 mg/ml		99
		Furosemide : 3 mg/ml Bivalirudin : 5 mg/ml		1713
		Furosemide Bleomycin sulfate		3646
		Furosemide Bleomycin sulfate		4154
		Furosemide : 2.9 mg/ml Blinatumomab : 0.125 & 0.375 µg/ml		3976
		Furosemide : 1 mg/ml Bumetanide : 0,006 mg/ml		1232
		Furosemide : 1 mg/ml Buprenorphine hydrochloride : 0,075 mg/ml		1232
		Furosemide : 10 mg/ml Caffeine : 10 mg/ml		3964
		Furosemide : 10 mg/ml Calcium gluconate : 100 mg/ml		3210
		Furosemide : 1 mg/ml Calcium gluconate : 2 mg/ml		1232
		Furosemide : 10 mg/ml Caspofungin acetate : 0.5 mg/ml		2233
		Furosemide : 3 mg/ml Caspofungin acetate : 0,7 mg/ml		2247
		Furosemide : 1 mg/ml Cefamandole nafate : 20 mg/ml		1232

	Furosemide : 10 mg/ml Cefepime dihydrochloride : 125 mg/ml		2141
	Furosemide : 3 mg/ml Cefiderocol sulfate tosylate : 20 mg/mL		4528
	Furosemide : 10 mg/ml Cefmetazole sodium : 100 mg/ml		93
	Furosemide : 0,2 mg/ml Cefoperazone sodium : 10 mg/ml		87
	Furosemide : 3 mg/ml Ceftaroline fosamil : 2,22 mg/ml		3249
	Furosemide : 3 mg/ml Ceftaroline fosamil : 2,22 mg/ml	RL	3249
	Furosemide : 10 mg/ml Ceftazidime : 83.3 mg/ml		1759
	Furosemide : 10 mg/ml Ceftazidime : 125 mg/ml		2141
	Furosemide : 3 mg/ml Ceftobiprole medocaril sodium : 2 mg/ml	RL	2269
	Furosemide : 3 mg/ml Ceftobiprole medocaril sodium : 2 mg/ml		2269
	Furosemide : 3 mg/ml Ceftolozane / tazobactam : 10/5 mg/ml		3828
	Furosemide : 1 mg/ml Cefuroxime sodium : 37,5 mg/ml		1232
	Furosemide : 1 mg/ml Chlorothiazide sodium : 10 mg/ml		3821
	Furosemide : 5,21 mg/ml Chlorpromazine hydrochloride : 0,26 mg/ml		1289
	Furosemide : 1 mg/ml Chlorpromazine hydrochloride : 5 mg/ml		1232
	Furosemide : 0.4 mg/ml Cimetidine hydrochloride : 3 mg/ml		1201
	Furosemide : 1 mg/ml Cimetidine hydrochloride : 4 mg/ml		1232
	Furosemide : 10 mg/ml Ciprofloxacin lactate : 2 mg/ml		288
	Furosemide : 5 mg/ml Ciprofloxacin lactate : 2 mg/ml		289
	Furosemide Cisatracurium besylate		3465
	Furosemide : 3 mg/ml Cisatracurium besylate : 2 & 5 mg/ml		299
	Furosemide : 10 mg/ml Cisatracurium besylate : 5 mg/ml		3463
	Furosemide : 3 mg/ml Cisatracurium besylate : 0.1 mg/ml		299
	Furosemide : 10 mg/ml Cisatracurium besylate : 5 mg/ml		3134
	Furosemide : 10 mg/ml Cisatracurium besylate : 5 mg/ml		3823
	Furosemide : 3 mg/ml Cladribine : 0.5 mg/ml		1496

		Furosemide : 3 mg/ml Cladribine : 0.015 mg/ml		1496
		Furosemide : 2 mg/ml Clonidine hydrochloride : 0.0075 mg/ml		1506
		Furosemide : 1.2 & 10 mg/ml Clonidine hydrochloride : 0.009 & 0.03 mg/ml		4130
		Furosemide : 10 mg/ml Cloxacillin sodium : 100 mg/ml		3012
		Furosemide : 1 mg/ml Cloxacillin sodium : 20 mg/ml		1232
		Furosemide Conivaptan	RL	3718
		Furosemide Daunorubicin/cytarabine liposomale : 0,4 mg/mL		4654
		Furosemide : 10 mg/ml Defibrotide : 8 mg/ml		3728
		Furosemide : 3.33>>10 mg/ml Dexamethasone sodium phosphate : 0.33>>3.33 mg/ml		2205
		Furosemide : 1 mg/ml Dexamethasone sodium phosphate : 4 mg/ml		1232
		Furosemide : 3 mg/ml Dexmedetomidine : 4 µg/ml		1712
		Furosemide : 10 mg/ml Dexmedetomidine : 4 µg/ml		4570
		Furosemide : 1 mg/ml Diamorphine hydrochloride : 0,5 mg/ml		1232
		Furosemide : 1 mg/ml Diazepam : 1 mg/ml		1232
		Furosemide : 10 mg/ml Diclofenac : 3 mg/ml		3823
		Furosemide : 1 mg/ml Digoxin : 25 µg/ml		1232
		Furosemide : 10 mg/ml Diltiazem hydrochloride : 1 & 5 mg/ml		198
		Furosemide : 10 mg/ml Diltiazem hydrochloride : 5 mg/ml		3210
		Furosemide : 10 mg/ml Diltiazem hydrochloride : 1 mg/ml		314
		Furosemide Dimenhydrinate		2087
		Furosemide : 10 mg/ml Dobutamine hydrochloride : 2 mg/ml		1041
		Furosemide : 2 mg/ml Dobutamine hydrochloride : 8 mg/ml		1506
		Furosemide : 10 mg/ml Dobutamine hydrochloride : 5 mg/ml		3210
		Furosemide : 2 mg/ml Dobutamine hydrochloride : 8 mg/ml		1506
		Furosemide : 1 mg/ml Dobutamine hydrochloride : 1 mg/ml		1058
		Furosemide : 10 mg/ml Dobutamine hydrochloride : 4 mg/ml		314

		Furosemide : 1 mg/ml Dobutamine hydrochloride : 0.5 mg/ml		1232
		Furosemide : 3 mg/ml Docetaxel : 0.9 mg/ml		1754
		Furosemide : 10 mg/ml Dopamine hydrochloride : 3,2 mg/ml		3210
		Furosemide : 2 mg/ml Dopamine hydrochloride : 8 mg/ml		1506
		Furosemide : 10 mg/ml Dopamine hydrochloride : 3,2 mg/ml		4389
		Furosemide : 10 mg/ml Dopamine hydrochloride : 3.2 mg/ml		314
		Furosemide : 3 mg/ml Doripenem : 5 mg/ml		2262
		Furosemide Doxapram hydrochloride		3612
		Furosemide : 10 mg/ml Doxorubicin hydrochloride : 2 mg/ml		763
		Furosemide : 3 mg/ml Doxorubicin hydrochloride liposome peg : 0.4 mg/ml		251
		Furosemide : 10 mg/ml Droperidol : 2.5 mg/ml		1088
		Furosemide : 10 mg/ml Droperidol : 2,5 mg/ml		763
		Furosemide : 2.5 mg/ml Enalaprilate : 0.0125 mg/ml		1703
		Furosemide : 10 mg/ml Epinephrine hydrochloride : 200 µg/ml		3210
		Furosemide : 10 mg/ml Epinephrine hydrochloride : 20 µg/ml		314
		Furosemide : 3 mg/ml Eravacycline : 0,6 mg/ml		4434
		Furosemide : 10 mg/ml Esmolol hydrochloride : 10 mg/ml		3210
		Furosemide : 10 mg/ml Esmolol hydrochloride : 10 mg/ml		3664
		Furosemide : 2 mg/ml Esomeprazole sodium : 0.32 mg/ml		1506
		Furosemide : 3 mg/ml Fenoldopam mesylate : 80 µg/ml		1803
		Furosemide : 10 mg/ml Fentanyl citrate : 50 µg/ml		314
		Furosemide : 10 mg/ml		4507
		Furosemide Eptifibatide		3934
		Furosemide : 10 mg/ml Esmolol hydrochloride : 10 mg/ml		3823
		Furosemide Esmolol hydrochloride		3607
		Furosemide : 10 mg/ml Fentanyl citrate : 50 µg/ml		63

		Furosemide : 10 mg/ml Haloperidol lactate : 0,5 mg/ml		3463
		Furosemide : 10 mg/ml		3948
		Furosemide : 10 mg/ml Foscarnet sodium : 24 mg/ml		73
		Furosemide : 3 mg/ml Gemcitabine hydrochloride : 10 mg/ml		1423
		Furosemide : 5 mg/ml Gentamicin sulfate : 6.4 mg/ml		805
		Furosemide : 10 mg/ml Haloperidol lactate : 0,5 mg/ml		3823
		Furosemide Haloperidol lactate		3465
		Furosemide : 10 mg/ml Heparin sodium : 500 UI/ml		3823
		Furosemide : 10 mg/ml		3134
		Furosemide : 10 mg/ml		939
		Furosemide : 1 mg/ml Flucloxacillin sodium : 20 mg/ml		1232
		Furosemide : 10 mg/ml Gentamicin sulfate : 10 mg/ml		789
		Furosemide : 10 mg/ml Haloperidol lactate : 0,5 mg/ml		3134
		Furosemide : 10 mg/ml Heparin sodium : 10 UI/ml		3210
		Furosemide : 10 mg/ml		316
		Furosemide : 1 mg/ml Heparin sodium : 20 UI/ml		1232
		Furosemide		3985
		Furosemide : 3 mg/ml		301
		Furosemide : 10 mg/ml Heparin sodium : 500 UI/ml		3134
		Furosemide : 10 mg/ml Heparin sodium : 100 UI/ml		314
		Furosemide : 3 mg/ml		1415
		Furosemide : 10 mg/ml Epinephrine hydrochloride : 16 & 100 µg/ml		4570
		Furosemide : 1 mg/ml Epinephrine hydrochloride : 8 µg/ml		1232
		Furosemide : 1 mg/ml Epinephrine hydrochloride : 16 & 100 µg/ml		4570
		Furosemide : 1 mg/ml Erythromycin lactobionate : 5 mg/ml		1232
		Furosemide : 10 mg/ml Esmolol hydrochloride : 10 mg/ml		523
		Furosemide : 1 mg/ml Esmolol hydrochloride : 20 mg/ml		4570
		Furosemide : 3 mg/ml Etoposide phosphate : 5 mg/ml		1410

		Furosemide : 10 mg/ml Famotidine		397
		Furosemide : 3 mg/ml Famotidine : 2 mg/ml		215
		Furosemide : 0.8 mg/ml Famotidine : 0.2 mg/ml		398
		Furosemide : 3 mg/ml Filgrastim : 30 µg/ml		244
		Furosemide : 10 mg/ml Fluconazole : 2 mg/ml		496
		Furosemide : 3 mg/ml Fludarabine phosphate : 1 mg/ml		492
		Furosemide : 10 mg/ml Fluorouracil : 50 mg/ml		763
		Furosemide : 10 mg/ml	RL	4603
		Furosemide : 10 mg/ml		4515
		Furosemide : 10 mg/ml		3948
		Furosemide : 0.11 mg/ml		1338
		Furosemide : 0,2 >>0,9 mg/ml		4426
		Furosemide : 10 mg/ml Folate calcium : 10 mg/ml		763
		Furosemide : 3 mg/ml Fosfomycin : 30 mg/ml	 	4055
		Furosemide Heparin sodium		3465
		Furosemide : 10 mg/ml Heparin sodium : 100 UI/ml		4724
		Furosemide : 10 mg/ml Heparin sodium : 1 UI/ml	RL	1228
		Furosemide : 10 mg/ml Heparin sodium : 1 UI/ml	 	1228
		Furosemide : 2 mg/ml		4370
		Furosemide : 2 mg/ml		3967
		Furosemide : 10 mg/ml Gallium nitrate : 1 mg/ml		91
		Furosemide : 0,8 mg/ml Gentamicin sulfate : 1,6 mg/ml	 	367
		Furosemide : 1 mg/ml Gentamicin sulfate : 8 mg/ml		1232
		Furosemide : 5 mg/ml Glycerophosphate disodium		4332
		Furosemide : 0.4 mg/ml Granisetron hydrochloride : 1 mg/ml		57
		Furosemide : 3 mg/ml Granisetron hydrochloride : 0,05 mg/ml		49
		Furosemide : 10 mg/ml Heparin sodium : 1000 UI/ml		763
		Furosemide : 5,21 mg/ml Heparin sodium : 58,34 UI/ml		1289

		Furosemide : 3 mg/ml Hetastarch : 60 mg/ml		1721
		Furosemide Hyaluronidase		3617
		Furosemide Hyaluronidase		3184
		Furosemide : 10 mg/ml Hydrocortisone sodium succinate : 1 mg/ml		1228
		Furosemide : 1 mg/ml Hydrocortisone sodium succinate : 50 mg/ml		1232
		Furosemide : 10 mg/ml Hydrocortisone sodium succinate : 1 mg/ml	RL	1228
		Furosemide : 10 mg/ml Hydromorphone hydrochloride : 1 mg/ml		314
		Furosemide : 10 mg/ml Ibuprofen lysinate : 10 mg/ml		4419
		Furosemide : 0,8 & 10 mg/ml Idarubicin hydrochloride : 1 mg/ml		491
		Furosemide : 10 mg/ml Imipenem-Cilastatin / Relebactam : 5 mg/ml		4433
		Furosemide : 10 mg/ml Indomethacin sodium trihydrate : 1 mg/ml		467
		Furosemide : 10 mg/ml Insulin : 2 UI/ml		3134
		Furosemide Insulin		3465
		Furosemide : 10 mg/ml Insulin : 2 UI/ml		3823
		Furosemide : 10 mg/ml Insulin : 1 UI/ml		3210
		Furosemide : 1 & 5 mg/ml Insulin aspart : 1 UI/ml		1508
		Furosemide : 3 mg/ml Isavuconazonium sulfate : 1.5 mg/ml		3829
		Furosemide : 1 mg/ml Isoprenaline hydrochloride : 0,004 mg/ml		1232
		Furosemide : 1 mg/ml Isosorbide dinitrate : 1 mg/ml		1232
		Furosemide : 0,16 mg/ml Kanamycin sulfate : 2 mg/ml		367
		Furosemide : 10 mg/ml Ketamine hydrochloride : 50 mg/ml		2109
		Furosemide : 10 mg/ml Labetalol hydrochloride : 1.6 mg/ml		89
		Furosemide : 10 mg/ml Labetalol hydrochloride : 2 mg/ml		314
		Furosemide : 10 mg/ml Labetalol hydrochloride : 5 mg/ml		3210
		Furosemide : 3 mg/ml Lansoprazole : 0.55 mg/ml		1625
		Furosemide : 10 mg/ml Levofloxacin : 5 mg/ml		1072

		Furosemide : 10 mg/ml Levosimendan : 0,025 & 0,05 mg/ml		4571
		Furosemide : 1 mg/ml Lidocaine hydrochloride : 2 mg/ml		1232
		Furosemide : 3 mg/ml Linezolid : 2 mg/ml		1925
		Furosemide : 10 mg/ml Lorazepam : 0.5 mg/ml		314
		Furosemide : 10 mg/ml Lorazepam : 0.33 mg/ml		186
		Furosemide : 10 mg/ml Magnesium sulfate : 6 mg/ml		4698
		Furosemide : 10 mg/ml Magnesium sulfate : 200 mg/ml		3210
		Furosemide : 10 mg/ml Mannitol : 200 mg/ml		3823
		Furosemide : 3 mg/ml Melphalan : 0.1 mg/ml		169
		Furosemide : 10 mg/ml Meropenem : 50 mg/ml		4319
		Furosemide : 10 mg/ml Meropenem : 1 & 50 mg/ml		266
		Furosemide : 1 mg/ml Meropenem : 1 & 20 mg/ml		266
		Furosemide : 2 mg/ml Methadone hydrochloride : 0.2 mg/ml		1506
		Furosemide : 10 mg/ml Methotrexate sodium : 25 mg/ml		763
		Furosemide : 10 mg/ml Methotrexate sodium : 25 mg/ml		1088
		Furosemide : 10 mg/ml Metoclopramide hydrochloride : 5 mg/ml		763
		Furosemide : 1 mg/ml Metoclopramide hydrochloride : 1 mg/ml		1232
		Furosemide : 10 mg/ml Metoprolol tartrate : 1 mg/ml		2346
		Furosemide : 3 mg/ml Micafungin : 1.5 mg/ml		2108
		Furosemide : 10 mg/ml Midazolam hydrochloride : 2,1 mg/ml		3823
		Furosemide : 10 mg/ml Midazolam hydrochloride : 2 mg/ml		314
		Furosemide : 10 mg/ml Midazolam hydrochloride : 5 mg/ml		186
		Furosemide Midazolam hydrochloride		3781
		Furosemide Midazolam hydrochloride		3465
		Furosemide : 10 mg/ml Midazolam hydrochloride : 2,1 mg/ml		3463
		Furosemide : 10 mg/ml Midazolam hydrochloride : 2,1 mg/ml		3134

		Furosemide : 0.08 mg/ml Midazolam hydrochloride : 0.05 & 0.25 mg/ml		1888	
		Furosemide : 10 mg/ml Midazolam hydrochloride : 1 mg/ml		4605	
		Furosemide : 10 mg/ml Midazolam hydrochloride : 1 mg/ml		176	
		Furosemide : 2,5 mg/ml Midazolam hydrochloride : 1 mg/ml		4605	
		Furosemide : 10 mg/ml Milrinone lactate : 1 mg/ml		4506	
		Furosemide : 4 & 5 mg/ml Milrinone lactate : 0.100 & 0.350 mg/ml		191	
		Furosemide : 10 mg/ml Milrinone lactate : 0.2 mg/ml		314	
		Furosemide : 1 mg/ml Morphine sulfate : 1 mg/ml		1232	
		Furosemide : 0.8 >> 10 mg/ml Morphine sulfate : 1 mg/ml		62	
		Furosemide Morphine sulfate		3531	
		Furosemide : 10 mg/ml Morphine sulfate : 2 mg/ml		314	
		Furosemide : 10 mg/ml N-acetylcysteine : 200 mg/ml		3766	
		Furosemide : 10 mg/ml Naloxone hydrochloride : 0.4 mg/ml		3408	
		Furosemide : 10 mg/ml Nefopam : 1,7 mg/ml		4698	
		Furosemide : 0,4 mg/ml Netilmicin sulfate : 1,5 mg/ml			367
		Furosemide Nicardipine hydrochloride		3941	
		Furosemide Nicardipine hydrochloride		3614	
		Furosemide : 10 mg/ml Nicardipine hydrochloride : 1 mg/ml		314	
		Furosemide : 10 mg/ml Nimodipine : 0.2 mg/ml		3134	
		Furosemide : 10 mg/ml Nimodipine : 0.2 mg/ml		3823	
		Furosemide : 10 mg/ml Nitroglycerin : 0.4 mg/ml		314	
		Furosemide : 10 mg/ml Nitroglycerin : 0.2 mg/ml			3823
		Furosemide Nitroglycerin		3465	
		Furosemide : 0.67 mg/ml Nitroglycerin : 0.4 mg/ml			1049
		Furosemide : 10 mg/ml Nitroglycerin : 1 mg/ml		3210	
		Furosemide : 10 mg/ml Nitroglycerin : 0.2 mg/ml		3134	

		Furosemide : 1 mg/ml Norepinephrine bitartrate : 0,016 mg/ml		4570
		Furosemide : 10 mg/ml Norepinephrine bitartrate : 0,1 mg/ml		4570
		Furosemide : 1 mg/ml Norepinephrine bitartrate : 0,1 mg/ml		4570
		Furosemide : 10 mg/ml Norepinephrine bitartrate : 0,016 mg/ml		4570
		Furosemide : 10 mg/ml Norepinephrine bitartrate : 0.1 mg/ml		3210
		Furosemide : 10 mg/ml Norepinephrine bitartrate : 0.128 mg/ml		314
		Furosemide : 10 mg/ml Omeprazole sodium : 1.6 mg/ml		3823
		Furosemide : 3 mg/ml Ondansetron hydrochloride : 1 mg/ml		334
		Furosemide : 5 mg/ml Oritavancin : 0.8 >>2 mg/ml		3152
		Furosemide : 3 mg/ml Oxaliplatin : 0,5 mg/ml		1662
		Furosemide : 3 mg/ml Paclitaxel : 1.2 mg/ml		248
		Furosemide : 1 >> 2 mg/ml Pantoprazole sodium : 0.16 >> 0.8 mg/ml		1902
		Furosemide Pantoprazole sodium		2090
		Furosemide : 10 mg/ml Paracetamol : 10 mg/ml		4698
		Furosemide : 10 mg/ml Paracetamol : 10 mg/ml		4742
		Furosemide : 0.8 mg/ml Pethidine hydrochloride : 10 mg/ml		62
		Furosemide : 10 mg/ml Pethidine hydrochloride : 10 mg/ml		62
		Furosemide : 2.4 mg/ml Pethidine hydrochloride : 10 mg/ml		62
		Furosemide : 1 mg/ml Pethidine hydrochloride : 5 mg/ml		1232
		Furosemide : 10 mg/ml Phenylephrine hydrochloride : 1 mg/ml		3210
		Furosemide : 4 mg/ml Phenylephrine hydrochloride : 0.64 mg/ml		2116
		Furosemide : 3 mg/ml Piperacillin sodium / tazobactam : 40/5 mg/ml		81
		Furosemide : 3 mg/ml Plazomicin sulfate : 24 mg/ml		4145
		Furosemide : 0,8 mg/ml Posaconazole : 1,2 mg/ml		4521
		Furosemide : 5,21 mg/ml Potassium chloride : 1250 mEq/l		1289
		Furosemide : 1 mg/ml Potassium chloride : 40 mEq/l		1232

		Furosemide : 10 mg/ml Potassium chloride : 40 mEq/l	RL	1228
		Furosemide : 10 mg/ml Potassium chloride : 40 mEq/l		1228
		Furosemide : 1 & 10 mg/ml Potassium phosphate		3781
		Furosemide : 10 mg/ml Procainamide hydrochloride : 8 mg/ml	∅	3210
		Furosemide : 1 mg/ml Prochlorperazine edysilate : 1.25 mg/ml		1232
		Furosemide : 1 mg/ml Promethazine hydrochloride : 5 mg/ml		1232
		Furosemide : 10 mg/ml Propofol		4524
		Furosemide : 3 mg/ml Propofol : 10 mg/ml	∅	300
		Furosemide : 10 mg/ml Ranitidine hydrochloride : 1 mg/ml		314
		Furosemide : 1 mg/ml Ranitidine hydrochloride : 0,5 mg/ml		1232
		Furosemide : 10 mg/ml Remdesivir : 1 mg/ml		4768
		Furosemide : 1 mg/ml Remifentanil hydrochloride : 120 µg/ml		3176
		Furosemide : 3 mg/ml Remifentanil hydrochloride : 25 & 250 µg/ml		59
		Furosemide : 1 mg/ml Remifentanil hydrochloride : 120 µg/ml		3294
		Furosemide Rocuronium bromide		3564
		Furosemide : 10 mg/ml Salbutamol sulfate : 1 mg/ml	∅	3216
		Furosemide : 3 mg/ml Sargramostim : 10 µg/ml		335
		Furosemide : 1 mg/ml Scopolamine N-butyl bromide		1232
		Furosemide Sodium bicarbonate		3466
		Furosemide : 10 mg/ml Sodium bicarbonate : 84 mg/ml	∅	3210
		Furosemide Sodium bicarbonate		3465
		Furosemide : 10 mg/ml Sodium bicarbonate : 84 mg/ml	∅	3212
		Furosemide : 10 mg/ml Sodium bicarbonate : 84 mg/ml	∅	3134
		Furosemide : 1 mg/ml Sodium bicarbonate : 84 mg/ml		1232
		Furosemide : 10 mg/ml Sodium bicarbonate : 84 mg/ml		3823
		Furosemide : 10 mg/ml Spiramycine adipate : 60 MUI/ml		4698

		Furosemide : 1 mg/ml Sufentanil citrate : 0.005 mg/ml		3294
		Furosemide : 10 mg/ml Sugammadex : 100 mg/ml		3372
		Furosemide : 3 mg/ml Sulbactam/durlobactam : 15/15 mg/ml		4801
		Furosemide : 10 mg/ml Tacrolimus : 1000 µg/ml		479
		Furosemide : 3 mg/ml Tedizolid phosphate : 0.8 mg/ml		3827
		Furosemide : 3 mg/ml Telavancin hydrochloride : 7.5 mg/ml		3254
		Furosemide : 3 mg/ml Telavancin hydrochloride : 7,5 mg/ml		3254
		Furosemide : 10 mg/ml Temocilline : 83.33 mg/ml		2231
		Furosemide : 3 mg/ml Teniposide : 0.1 mg/ml		905
		Furosemide : 10 mg/ml Thiopental sodium : 25 mg/ml		3767
		Furosemide : 10 mg/ml Thiopental sodium : 25 mg/ml		314
		Furosemide : 10 mg/ml Thiopental sodium : 60 mg/ml		3134
		Furosemide : 10 mg/ml Thiopental sodium : 60 mg/ml		3823
		Furosemide : 3 mg/ml Thiotepa : 1 mg/ml		249
		Furosemide : 0,5 & 10 mg/ml Tirofiban : 50 µg/ml		1603
		Furosemide Tirofiban		1512
		Furosemide : 1 mg/ml Tobramycin sulfate : 8 mg/ml		1232
		Furosemide : 0,8 mg/ml Tobramycin sulfate : 1,6 mg/ml		367
		Furosemide : 10 mg/ml Urapidil : 5 mg/ml		3134
		Furosemide : 10 mg/ml Urapidil : 5 mg/ml		3823
		Furosemide Urapidil		3465
		Furosemide : 10 mg/ml Urapidil : 5 mg/ml		3463
		Furosemide : 10 mg/ml Vancomycin hydrochloride : 10 mg/ml		3385
		Furosemide : 10 mg/ml Vasopressin : 1 UI/ml		4570
		Furosemide : 1 mg/ml Vasopressin : 1 UI/ml		4570
		Furosemide : 4 mg/ml Vasopressin : 0.4 UI/ml		2116

	Furosemide : 10 mg/ml Vasopressin : 1 UI/ml	∅	3210
		Furosemide : 10 mg/ml Vecuronium bromide : 1 mg/ml	314
		Furosemide : 1 mg/ml Verapamil hydrochloride : 0.5 mg/ml	1232
	Furosemide : 0.2 mg/ml Verapamil hydrochloride : 0.08 mg/ml		1057
		Furosemide : 10 mg/ml Vinblastine sulfate : 1 mg/ml	763
		Furosemide : 10 mg/ml Vincristine sulfate : 1 mg/ml	763
		Furosemide : 3 mg/ml Vinorelbine tartrate : 1 mg/ml	84



Voie d'administration



Bibliographie

	Type	Source
3	Revue	Trissel LA, Martinez JF. Compatibility of amifostine with selected drugs during simulated Y-site administration. Am J Health-Syst Pharm 1995 ; 52: 2208-2212.
49	Revue	Trissel LA, Martinez JF. Compatibility of granisetron hydrochloride with selected alkaline drugs. Am J Health-Syst Pharm 1995 ; 52: 208.
57	Revue	Mayron D, Gennaro AR. Stability and compatibility of granisetron hydrochloride in IV solutions and oral liquids and during simulated Y-site injection with selected drugs. Am J Health-Syst Pharm 1996 ; 53: 294-304.
59	Revue	Trissel LA, Gilbert DL, Martinez JF, Kim MC. Compatibility of remifentanyl hydrochloride with selected drugs during simulated Y-site administration. Am J Health-Syst Pharm 1997 ; 54: 2192-2196.
62	Revue	Pugh CB, Pabis DJ, Rodriguez C. Visual compatibility of morphine sulfate and meperidine hydrochloride with other injectable drugs during simulated Y-site injection. Am J Hosp Pharm 1991 ; 48: 123-125.
63	Revue	Marquardt Ed, Lam SSY. Visual compatibility of fentanyl citrate with selected drugs during simulated Y-site injection. Am J Hosp Pharm 1994 ; 51: 811-812.
73	Revue	Lor E, Takagi J. Visual compatibility of foscarnet with other injectable drugs. Am J Hosp Pharm 1990 ; 47: 157-159.
81	Revue	Trissel LA, Martinez JF. Compatibility of piperacillin sodium plus tazobactam with selected drugs during simulated Y-site injection. Am J Hosp Pharm 1994 ; 51: 672-678.

84	Revue	Trissel LA, Martinez JF. Visual, turbidimetric, and particle-content assessment of compatibility of vinorelbine tartrate with selected drugs during simulated Y-site injection. Am J Hosp Pharm 1994 ; 51: 495-499.
87	Revue	Lee DKT, Lee A, Wang DP. Compatibility of cefoperazone sodium and furosemide in 5% dextrose injection. Am J Hosp Pharm 1991 ; 48: 108-110.
89	Revue	Zeisler J, Alagna C. Incompatibility of labetalol hydrochloride and furosemide. Am J Hosp Pharm 1993 ; 50: 2521-2522.
91	Revue	Lober CA, Dollard PA. Visual compatibility of gallium nitrate with selected drugs during Y-site injection. Am J Hosp Pharm 1993 ; 50: 1208-1210.
93	Revue	Hutchings SR, Rusho WJ, Tyler LS. Compatibility of cefmetazole sodium with commonly used drugs during Y-site delivery. Am J Health-Syst Pharm 1996 ; 53: 2185-2188.
99	Revue	Trissel LA, Martinez JF. Compatibility of aztreonam with selected drugs during simulated Y-site administration. Am J Health-Syst Pharm 1995 ; 52: 1086-1090.
169	Revue	Trissel LA, Martinez JF. Physical compatibility of melphalan with selected drugs during simulated Y-site administration. Am J Hosp Pharm 1993 ; 50: 2359-2363.
176	Revue	Mantong ML, Marquardt ED. Visual compatibility of midazolam hydrochloride with selected drugs during simulated Y-site injection. Am J Health-Syst Pharm 1995 ; 52: 2567-2568.
186	Revue	Swart EL, Mooren RAG, Van Loenen AC. Compatibility of midazolam hydrochloride and lorazepam with selected drugs during simulated Y-site administration. Am J Health-Syst Pharm 1995 ; 52: 2020-2022.
191	Revue	Riley CM. Stability of milrinone and digoxin, furosemide, procainamide hydrochloride, propranolol hydrochloride, quinidine gluconate, or verapamil hydrochloride in 5% dextrose injection. Am J Hosp Pharm 1988 ; 45: 2079-2091.
198	Revue	Gayed AA, Kheshary PR, Hinkle RL. Visual compatibility of diltiazem injection with various diluents and medications during simulated Y-site injection. Am J Health-Syst Pharm 1995 ; 52: 516-520.
215	Revue	Keyi X, Gagnon N, Bisson C, Desmarais M, LeBel M. Stability of famotidine in polyvinyl chloride minibags and polypropylene syringes and compatibility of famotidine with selected drugs. Ann Pharmacotherapy 1993 ; 27: 422-426.
242	Revue	Campbell S, Nolan PE, Bliss M, Wood R, Mayersohn M. Stability of amiodarone hydrochloride in admixtures with other injectable drugs. Am J Hosp Pharm 1986 ; 43: 917-921.
244	Revue	Trissel LA, Martinez JF. Compatibility of filgrastim with selected drugs during simulated Y-site administration. Am J Hosp Pharm 1994 ; 51: 1907-1913.
248	Revue	Trissel LA, Martinez JF. Turbidimetric assessment of the compatibility of taxol with 42 other drugs during simulated Y-site injection. Am J Hosp Pharm 1993 ; 50: 300-304.
249	Revue	Trissel LA, Martinez JF. Compatibility of thiotepa (lyophilized) with selected drugs during simulated Y-site administration. Am J Health-Syst Pharm 1996 ; 53: 1041-1045.

251	Revue	Trissel LA, Gilbert DL, Martinez JF. Compatibility of doxorubicin hydrochloride liposome injection with selected other drugs during simulated Y-site administration. Am J Health-Syst Pharm 1997 ; 54: 2708-2713.
253	Revue	Trissel LA, Chandler SW, Folstad JT. Visual compatibility of amsacrine with selected drugs during simulated Y-site injection. Am J Hosp Pharm 1990 ; 47: 2525-2528.
266	Revue	Patel PR. Compatibility of meropenem with commonly used injectable drugs. Am J Health-Syst Pharm 1996 ; 53: 2853-2855.
288	Revue	Cervenka P, Dejong DJ, Butler BL, Monzingo MD. Visual compatibility of injectable ciprofloxacin lactate with selected injectable drugs during simulated Y-site administration. Hosp Pharm 1992 ; 27: 957-958,961-962.
289	Revue	Jim LK. Physical and chemical compatibility of intravenous ciprofloxacin with other drugs. Ann Pharmacotherapy 1993 ; 27: 704-707.
299	Revue	Trissel LA, Martinez JF, Gilbert DL. Compatibility of cisatracurium besylate with selected drugs during simulated Y-site administration. Am J Health-Syst Pharm 1997 ; 54: 1735-1741.
300	Revue	Trissel LA, Gilbert DL, Martinez JF. Compatibility of propofol injectable emulsion with selected drugs during simulated Y-site administration. Am J Health-Syst Pharm 1997 ; 54: 1287-1292.
301	Revue	Trissel LA, Gilbert DL, Martinez JF, Baker MB, Walter WV, Mirtallo JM. Compatibility of parenteral nutrient solutions with selected drugs during simulated Y-site administration. Am J Health-Syst Pharm 1997 ; 54: 1295-1300.
307	Revue	Trissel LA, Martinez JF. Compatibility of allopurinol sodium with selected drugs during simulated Y-site administration. Am J Hosp Pharm 1994 ; 51: 1792-1799.
314	Revue	Chiu MF, Schwartz ML. Visual compatibility of injectable drugs used in the intensive care unit. Am J Health-Syst Pharm 1997 ; 54: 64-65.
316	Revue	Veltri M, Lee CKK. Compatibility of neonatal parenteral nutrient solutions with selected intravenous drugs. Am J Health-Syst Pharm 1996 ; 53: 2611-2613.
334	Revue	Trissel LA, Tramonte SM, Grilley BJ. Visual compatibility of ondansetron hydrochloride with selected drugs during simulated Y-site injection. Am J Hosp Pharm 1991 ; 48: 988-992.
335	Revue	Trissel LA, Bready BB, Kwan JW, Santiago NM. Visual compatibility of sargramostim with selected antineoplastic agents, anti-infectives, or other drugs during simulated Y-site injection. Am J Hosp Pharm 1992 ; 49: 402-406.
367	Revue	Thompson DF, Allen LV, Desai SR, Rao PS. Compatibility of furosemide with aminoglycoside admixtures. Am J Hosp Pharm 1985 ; 42: 116-119.
397	Revue	Fong PA, Ward J. Visual compatibility of intravenous famotidine with selected drugs. Am J Hosp Pharm 1989 ; 46: 125-126.
398	Revue	Jay GT, Fanikos J, Souney PF. Visual compatibility of famotidine with commonly used critical-care medications during simulated Y-site injection. Am J Hosp Pharm 1988 ; 45: 1556-1557.

467	Revue	Ishisaka DY, van Vleet J, Marquardt E. Visual compatibility of indomethacin sodium trihydrate with drugs given to neonates by continuous infusion. Am J Hosp Pharm 1991 ; 48: 2442-2443.
479	Revue	Min DI, Brown T, HWang GC. Visual compatibility of tacrolimus with commonly used drugs during simulated Y-site injection. Am J Hosp Pharm 1992 ; 49: 2964-2966.
491	Revue	Turowski RC, Durthaler JM. Visual compatibility of idarubicin hydrochloride with selected drugs during simulated Y-site injection. Am J Hosp Pharm 1991 ; 48: 2181-2184.
492	Revue	Trissel LA, Parks NPT, Santiago NM. Visual compatibility of fludarabine phosphate with antineoplastic drugs, anti-infectives, and other selected drugs during simulated Y-site injection. Am J Hosp Pharm 1991 ; 48: 2186-2189.
496	Revue	Lor E, Sheybani T, Takagi J. Visual compatibility of fluconazole with commonly used injectable drugs during simulated Y-site administration. Am J Hosp Pharm 1991 ; 48: 744-746.
523	Revue	Thompson DF, Thompson GD. Visual compatibility of esmolol hydrochloride and furosemide in 5% dextrose or 0.9% sodium chloride injections. Am J Hosp Pharm 1987 ; 44: 2740.
763	Revue	Cohen MH, Jonhson-Early A, Hood MA, McKenzie M, Citron ML, Jaffe N, Krasnow SH. Drug precipitation within IV tubing : A potential hazard of chemotherapy administration. Cancer Treat Rep 1985 ; 69: 1325-1326.
789	Revue	Garner SS, Wiest DB. Compatibility of drugs separated by a fluid barrier in a retrograde intravenous infusion system. Am J Hosp Pharm 1990 ; 47: 604-606.
796	Revue	Asker AF, Ferdous AJ. Photodegradation of furosemide solutions. PDA J Pharm Sci Technol 1996 ; 50: 158-162.
805	Revue	Oskroba DM, Leissing NC, Trissel LA. An automated process for determining the physical compatibility of drugs. Hosp Pharm 1997 ; 32: 1013-1020.
905	Revue	Trissel LA, Martinez JF. Screening teniposide for Y-site physical incompatibilities. Hosp Pharm 1994 ; 29: 1010-1017.
921	Revue	Trissel LA, Gilbert DL, Martinez JF. Incompatibility and compatibility of amphotericin B cholesteryl sulfate complex with selected other drugs during simulated Y-site administration. Hosp Pharm 1998 ; 33: 284-292.
939	Revue	Gilbar PJ, Groves CF. Visual compatibility of total parenteral nutrition solution (Synthamin 17 Premix*) with selected drugs during simulated Y-site injection. Aust J Hosp Pharm 1994 ; 24: 167-170.
1041	Revue	Hasegawa GR, Eder JF. Visual compatibility of dobutamine hydrochloride with other injectable drugs. Am J Hosp Pharm 1984 ; 41: 949-951.
1049	Revue	Klamerus KJ, Ueda CT, Newton DW. Stability of nitroglycerin in intravenous admixtures. Am J Hosp Pharm 1984 ; 41: 303-305.
1057	Revue	Cutie MR. Compatibility of verapamil hydrochloride injection with commonly used additives. Am J Hosp Pharm 1983 ; 40: 1205-1207.

1058	Revue	Kirschenbaum HL, Aronoff W, Piltz GW, Perentesis GP, Cutie AJ. Compatibility and stability of dobutamine hydrochloride with large-volume parenterals and selected additives. Am J Hosp Pharm 1983 ; 40: 1690-1691.
1072	Revue	Saltzman CL, Tom CM, Mitchell A, Fan JH, Gailey RA. Compatibility of levofloxacin with 34 medications during simulated Y-site administration. Am J Health-Syst Pharm 1999 ; 56: 1458-1459.
1088	Revue	Johnston A, McKenzie MA, Krasnow SH, Hood MA, Cohen MH. Drug trapping in intravenous infusion side arms. JAMA 1984 ; 252: 2392.
1201	Revue	Yuhes EM, Lofton FT, Rosenberg HA, Mayron D, Baldinus JG. Cimetidine hydrochloride compatibility III: Room temperature stability in drug admixtures. Am J Hosp Pharm 1981 ; 38: 1919-1922.
1228	Revue	Allen LV, Stiles ML. Compatibility of various admixtures at Y-injection sites of intravenous administration sets. Part2. Am J Hosp Pharm 1981 ; 38: 380-381.
1232	Revue	Beatson C, Taylor A. A physical compatibility study of furosemide & flucloxacillin injections. Br J Pharm Pract 1987 ; 9: 223-226, 236.
1289	Revue	Hecq JD, Evrard JM, Gillet P, Grosdent N. Etude de stabilité visuelle du chlorhydrate de chlorpromazine, du chlorure de potassium, de la furosémide et de l'héparine sodique en perfusion continue. Pharmakon 1998 ; 116: 145-148.
1338	Revue	Baptista RJ, Dumas GJ, Bistrrian BR, Condella F, Blackburn GL. Compatibility of total nutrient admixtures and secondary cardiovascular medications. Am J Hosp Pharm 1985 ; 42: 777-778.
1410	Revue	Trissel LA, Martinez JF, Simmons M. Compatibility of etoposide phosphate with selected drugs during simulated Y-site injection. J Am Pharm Assoc 1999 ; 39: 141-145.
1415	Revue	Trissel L.A, Gilbert D.L, Martinez J.F, Baker M.B, Walter W.V, Mirtallo J.M. Compatibility of medications with 3-in-1 parenteral nutrition admixtures. JPEN 1999 ; 23: 67-74.
1423	Revue	Trissel LA, Martinez JF, Gilbert DL. Compatibility of gemcitabine hydrochloride with 107 selected drugs during simulated Y-site injection. J Am Pharm Assoc 1999 ; 39: 514-518.
1496	Revue	Trissel LA, Martinez JF, Gilbert DL. Screening cladribine for Y-site physical compatibility with selected drugs. Hosp Pharm 1996 ; 31: 1425-1428.
1506	Revue	Lopez-Cabezas C, Guerrero L, Molas G, Anglada H, Soy D. Physicochemical compatibility of high concentration drugs usually Y-site administered in intensive care units. EJHP 2015 ;22:107-112.
1508	Revue	Voirol P, Berger-Gryllaki M, Pannatier A, Eggimann P, Sadeghipour F. Visual compatibility of insulin aspart with intravenous drugs frequently used in ICU. EJHP 2015 ;22:123-124.
1512	Laboratoire	Tirofiban (Aggrastat®) - Summary of Product Characteristics Beacon Pharmaceuticals Ltd 2015
1603	Revue	Bergquist PA, Manas D, Hunke WA, Reed RA. Stability and compatibility of tirofiban hydrochloride during simulated Y-site administration with other drugs. Am J Health-Syst Pharm 2001 ; 58: 1218-1223.
1611	Revue	Chalmers JR, Bobek MB, Militello MA. Visual compatibility of amiodarone hydrochloride injection with various intravenous drugs. Am J Health-Syst Pharm 2001 ; 58: 504-506.

1625	Revue	Trissel LA, Saenz C, Williams YW, Ingram D. Incompatibilities of lansoprazole injection with other drugs during simulated Y-site coadministration. Int J Pharm Compound 2001 ; 5: 314-321.
1662	Revue	Trissel LA, Saenz CA, Ingram DS, Ogundele AB. Compatibility screening of oxaliplatin during simulated Y-site administration with other drugs. J Oncol Pharm Practice 2002 ; 8: 33-37.
1680	Revue	Donnelly RF. Chemical stability of furosemide in minibags and polypropylene syringes. Int J Pharm Compound 2002 ; 6: 468-470.
1703	Revue	Schuster F, Bernard R. Kompatibilität von enalaprilat i.v. mit ausgewählten arzneimitteln. Krankenhauspharmazie 1995 ; 16: 101-103.
1712	Revue	Trissel LA, Saenz CA. Compatibility screening of Precedex during simulated Y-site administration with other drugs. Int J Pharm Compound 2002 ; 6: 230-233.
1713	Revue	Trissel LA, Saenz CA. Compatibility screening of bivalirudin during simulated Y-site administration with other drugs. Int J Pharm Compound 2002 ; 6: 311-315.
1721	Revue	Trissel LA, Williams KY, Baker MB. Compatibility screening of Hextend during simulated Y-site administration with other drugs. Int J Pharm Compound 2001 ; 5: 69-72.
1754	Revue	Trissel LA, Gilbert DL, Wolkin AC. Compatibility of docetaxel with selected drugs during simulated Y-site administration. Int J Pharm Compound 1999 ; 3: 241-244.
1759	Revue	Servais H, Tulkens PM. Stability and compatibility of ceftazidime administered by continuous infusion to intensive care patients. Antimicrob Agents Chemother 2001 ; 45: 2643-2647.
1800	Revue	Voytilla KL, Tyler LS, Rusho WJ. Visual compatibility of azithromycin with 24 commonly used drugs during simulated Y-site delivery. Am J Health-Syst Pharm 2002 ; 59: 853-855.
1803	Revue	Trissel LA, Saenz CA, Ogundele OB, Ingram D, Baker MB. Compatibility of fenoldopam mesylate with other drugs during simulated Y-site administration. Am J Health-Syst Pharm 2003 ; 60: 80-85.
1855	Revue	Carla-Broch S, Esteve-Romero J, Garcia-Alvarez-Coque MC. Furosemide assay in pharmaceuticals by Micellar liquid chromatography: study of the stability of the drug. J Pharm Biomed Anal 2000 ; 23: 803-817.
1888	Revue	Janknegt R, Van den Berg TJ, De Jong M, Oldenhof HGJ, Steenhoek A. Compatibility study of midazolam. Ziekenhuisfarmacie 1986 ; 2: 45-48.
1902	Revue	Walker SE, Wyllie A, Law S. Physical compatibility of pantoprazole with selected medications during simulated Y-site administration. Can J Hosp Pharm 2004 ; 57, 2: 90-96.
1925	Revue	Trissel LA, Williams KY, Gilbert DL. Compatibility screening of linezolid injection during simulated Y-site administration with other drugs and infusion solutions. J Am Pharm Assoc 2000 ; 40: 515-519.
1963	Revue	Honisko ME, Fink JM, Militello MA, Mauro VF, Alexander KS. Compatibility of argatroban with selected cardiovascular agents. Am J Health-Syst Pharm 2004 ; 61: 2415-2418.
1982	Revue	Trissel LA, Ogundele AB. Compatibility of anidulafungin with other drugs during simulated Y-site administration. Am J Health-Syst Pharm 2005 ; 62: 834-837.

2087	Revue	Ferreira E, Forest JM, Hildgen P. Compatibility of dimenhydrinate injectable by Y administration. Pharmactuel 2004 ; 37: 17-20.
2090	Revue	Pere H, Chasse V, Forest JM, Hildgen P. Compatibility of injectable pantoprazole in Y-site administration. Pharmactuel 2004 ; 37: 193-196.
2108	Revue	Trusley C, Kupiec TC, Trissel LA. Compatibility of micafungin injection with other drugs during simulated Y-site co-administration. Int J Pharm Compound 2006 ; 10: 230-232.
2109	Revue	Pelletier E, Forest JM, Hildgen P. Compatibilité de la kétamine injectable lors de l'administration en dérivé avec d'autres médicaments usuels. Pharmactuel 2006 ; 39: 71-75.
2116	Revue	Faria CE, Fiumara K, Patel N, Tran DC. Visual compatibility of furosemide with phenylephrine and vasopressine. Am J Health-Syst Pharm 2006 ; 63: 906-908.
2141	Revue	Barinian N, Chanteux H, Viaene E, Servais H, Tulkens PM. Stability and compatibility study of cefepime in comparaison with ceftazidime for potential administration by continuous infusion under conditions pertinent to ambulatory treatment of cystic fibrosis patients and to administration in intensive care units. J Antimicrob Chemother 2003 ; 51: 651-658.
2205	Revue	Negro S, Rendon AL, Azuara ML, S?nchez Y, Fern?ndez-Carballido A, Barcia E. Compatibility and stability of furosemide and dexamethasone combined in infusion solutions. Arzneimittel Forschung 2006 ; 56, 10: 714-720.
2231	Revue	de Jongh R, Hens R, Basma V, mouton JW, Tulkens PM, Carryn S. Continuous versus intermittent infusion of temocillin, a directed spectrum penicillin for intensive care patients with nosocomial pneumonia: stability, compatibility, population pharmacokinetic studies and breakpoint selection. J Antimicrob Chemother 2008 ; 61, 2: 382-388.
2233	Revue	Condie C.K, Tyler L.S, Barker B, Canann D.M. Visual compatibility of caspofungin acetate with commonly used drugs during simulated Y-site delivery Am J Health-Syst Pharm 2008 ; 65, 5: 454-457.
2247	Revue	Chan P, Heatherly K, Kupiec T.C, Trissel L.A. Compatibility of caspofungin acetate injection with other drugs during simulated Y-site coadministration. Int J Pharm Compound 2008 ; 12, 3: 276-278.
2262	Revue	Brammer MK, Chan P, Heatherly K, Trusley C, Kupiec TC, Trissel LA, Psathas PA, Gilmor T, Schaufelberger D. Compatibility of doripenem with other drugs during simulated Y-site administration Am J Health-Syst Pharm 2008 ; 65: 1261-1265.
2269	Revue	Chan P, Bishop A, Kupiec TC, Trissel LA, Gole D, Jimidar IM, Vermeersch H. Compatibility of ceftobiprole medocaril with selected drugs during simulated Y-site administration. Am J Health-Syst Pharm 2008 ; 65, 16: 1545-1551.
2346	Revue	Newland A.M, Mauro V.F, Alexander K.S. Physical compatibility of metoprolol tartrate injection with selected cardiovascular agents Am J Health-Syst Pharm 2009 ; 66: 986-987.
3012	Revue	Sullivan T, Forrest J.M, Leclair G. Compatibility of Cloxacillin Sodium with Selected Intravenous Drugs During Simulated Y-Site Administration Hosp Pharm 2015 ; 50, 3: 214-220.
3134	Revue	Perez Jua En, Maqueda Palau M, Arévalo Rubert Mt, Ribas Nicolau B, Amoros Cerdà SM. Compatibilidad visual y física de la furosemida en mezclas intravenosas para perfusión continua. Enferm Intensiva 2010 ; 21: 96-103.
3152	Revue	Kumar A, Mann HJ. Visual compatibility of oritavancin diphosphate with selected coadministered drugs during simulated Y-site administration. Am J Health-Syst Pharm 2010 ; 67: 1640-1644.

3176	Poster	Humbert Delaloye V, Berger M, Voirol P, Pannatier A. Compatibilité du Remifentanil avec d'autres médicaments injectables : influence du soluté. 16èmes JFSPH, Sion, 18-19 novembre 2010
3184	Laboratoire	Hyaluronidase (Hyalase®) - Summary of Product characteristics.
3201	Revue	DRUGS Physical compatibility of alprostadil with commonly used IV solutions and medications in the neonatal intensive care unit. J Pediatr Pharmacol Ther 2006 ; 11:233-6.
3210	Revue	Jasti Bhaskara R, Saraf Poonam. Compatibility of Parenteral Furosemide with Seventeen Secondary Drugs Used in Standard Concentrations. Int J Pharm Compound 2011 ; 15, 3: 259-261.
3212	Revue	Ribas Nicolau, B.; Pérez Juan, E.; Amor's Cerdá, S.M.; Arvalo Rubert, M.J.; Maqueda Palau, M. Compatibilidad física del bicarbonato sódico con fármacos de uso frecuente en la unidad de cuidados intensivos. Enferm Intensiva 2011 ;22:78-82.
3216	Revue	Legris ME, Valiquette ME, Lavoie A, Forest JM, Leclair G. Compatibilité physique par évaluation visuelle du salbutamol injectable lors de son administration en Y. Pharmactuel 2011 ; 44, 1 : 14-18
3249	Revue	Singh BM, Dedhiya MG, Dinunzio J, Chan P, Kupiec TC, Trissel LA, Laudano JB. Compatibility of ceftazolin sodium for injection with selected drugs during simulated Y-site administration. Am J Health-Syst Pharm 2011 ; 68: 2163-2169.
3254	Revue	Housman S.T, Tessier P.R, Nicolau D.P, Kuti J.L. Physical compatibility of telavancin hydrochloride with select i.v. drugs during simulated Y-site administration Am J Health-Syst Pharm 2011 ; 68: 2265-2270.
3294	Revue	Humbert-Delaloye V, Berger M, Voirol P, Pannatier A. In vitro compatibility of remifentanil hydrochloride and sufentanil citrate with selected drugs EJHP 2012 ; 19: 57-64.
3372	Revue	Hanci V, Ali Kiraz H, Ömür D, Ekin S, Uyan B, Yurtlu B.S. Precipitation in Gallipoli: Sugammadex / Amiodarone & Sugammadex / Dobutamine & Sugammadex / Protamine. Rev Bras Anesthesiol 2013 ; 63, 1: 163-166.
3385	Revue	Raverdi V, Ampe E, Hecq JD, Tulkens PM. Stability and compatibility of vancomycin for administration by continuous infusion. J Antimicrob Chemother 2013 ; 68: 1179-1182.
3408	Revue	Tollec S, Touzin K, Pelletier E, Forest J.M. Evaluation visuelle de la compatibilité physique de la naloxone avec d'autres médicaments intraveineux usuels. Pharmactuel 2013 ; 46, 1 : 16-21.
3463	Revue	Eva Perez Juan, Maria Jos Arévalo Rubert , Silvia Monica Amoros Cerda , Palau M.M, Nicolau B.R. Fármacos en perfusión continua en la unidad de cuidados intensivos: estudio de compatibilidad. Nursing 2011 ; 29 :62-6
3464	Revue	Monica Maqueda-Palau, Eva Pérez-Juan, Maria Josep Arévalo-Rubert, Sylvia Monica Amoros-Cerda, Bàrbara Ribas-Nicolau. Compatibilidad física de la amiodarona en perfusión continua Enferm Clin 2011 21:25-29.
3465	Revue	E. Pérez Juan, M. Maqueda Palau, M. Arvalo Rubert, B. Ribas Nicolau, S.M. Amor's Cerdá. Compatibilidad visual y física de la furosemida en mezclas intravenosas para perfusión continua. Enferm Intensiva 2010 ;21:96-103.
3466	Revue	B. Ribas Nicolau, E. Pérez Juan, S.M. Amor's Cerdá, M.J. Arvalo Rubert, M. Maqueda Palau. Compatibilidad física del bicarbonato sódico con fármacos de uso frecuente en la unidad de cuidados intensivos Enferm Intensiva 2011 ;22:78-82.
3490	Revue	Elwell R.J, Spencer A.P, Barnes J.F, Wynn J.E, Jones C.E. Stability of furosemide in human albumin solution. Ann Pharmacotherapy 2002 ; 36: 423-426.

3531	Laboratoire	Morphine sulphate 10 mg/mL injection BP – Summary of Product Characteristics Wockhardt 2014
3564	Laboratoire	Rocuronium B Braun - Résumé des caractéristiques du produit. B Braun 2012
3607	Laboratoire	Esmolol hydrochloride for injection - Summary of Product Characteristics AOP Orphan Pharmaceuticals AG 2013
3612	Laboratoire	Doxapram (Dopram) - Summary of Product Characteristics Amdipharm Mercury Company 2012
3614	Laboratoire	Nicardipine Injection - Summary of Product Characteristics American Regent Inc 2013
3617	Laboratoire	Hyaluronidase (Hyalase®) - Summary of Product Characteristics Wockhardt 2011
3639	Laboratoire	Furosemide - Summary of Product Characteristics Wockhardt 2013
3646	Laboratoire	Bléomycine sulfate (Bléomycine Bellon®) - Résumé des caractéristiques du produit Sanofi Aventis France 2013
3664	Revue	Zhao B, Sun W. Incompatibility of esmolol hydrochloride and furosemide in a central venous access port Am J Health-Syst Pharm 2014 ; 71:901-902.
3718	Laboratoire	Conivaptan (Vaprisol®) - Summary of Product Characteristics Bayer Healthcare Corporation 2012
3728	Revue	Correard F, Savry A, Gauthier-Villano L, Pisano P, Pourroy B. Visual compatibility of defibrotide with selected drugs during simulated Y-site administration. Am J Health-Syst Pharm 2014 ; 71: 1288-1291.
3766	Revue	Forrest J.M, Hildgen P. Compatibilité de l'acétylcystéine injectable lors de son administration en Y avec d'autres médicaments usuels Pharmactuel 2014 ; 47, 3 : 161-165.
3767	Revue	Legris M.E, Lavoie A, Forrest J.M, Hildgen P. Compatibilité par évaluation visuelle du thiopental injectable lors de son administration en Y avec des médicaments usuels. Pharmactuel 2014 ; 47, 3 : 167-172.
3781	Revue	Humbert-Delaloye V, Berger-Gryllaki M, Voirol P, Testa B, Pannatier A Screening for physicochemical incompatibilities of intravenous drugs in intensive care units: the case of monobasic potassium phosphate and furosemide. EJHP 2015 ;22:1 56-58
3821	Revue	Cies J.J, Moore W.S, Chopra A, Lu G, Mason R.W. Stability of furosemide and chlorothiazide stored in syringes. Am J Health-Syst Pharm 2015 ; 72:2182-2188
3823	Revue	Juan E.P, Palau M.M, Cerdá S.A, Rubert M.A, Nicolau B.R. Compatibilité physique de médicaments administrés dans l'unité de soins intensifs Pharmactuel 2015 ; 48, 3 : 146-152.
3824	Revue	Boudi S, Roy H, Forest JM, Leclair G. Compatibilité physique de l'association amoxicilline-acide clavulanique en injection avec plusieurs autres médicaments lors d'une administration en Y. Pharmactuel 2023 2023;56,3:91-98
3827	Poster	Ghazi I.M, Hamada Y, Nicolau D.P. Compatibility of tedizolid phosphate with selected intravenous drugs via simulated Y-site conditions. ASHP Midyear 2015
3828	Poster	Thabit A.K, Hamada Y, Nicolau D.P. Ceftazolidime/tazobactam physical compatibility during simulated Y-site administration. ASHP Midyear 2015

3829	Poster	So W, Kim L, Thabit A.K, Nicolau D.P, Kuti J.L. Compatibility of isavunazonium sulfate during simulated Y-site administration. ASHP Midyear 2015
3934	Laboratoire	Eptifibatide (Integrilin®) - Résumé des caractéristiques du produit GlaxoSmithKline Laboratoire 2016
3941	Laboratoire	Nicardipine - Summary of Product Characteristics Concordia International 2017
3948	Revue	Bouchoud L, Fonzo-Christe C, Klingmüller M, Bonnabry P. Compatibility of Intravenous Medications With Parenteral Nutrition - In Vitro Evaluation. JPEN 2012 ;30. 416-424.
3964	Revue	Audet M.A, Forest E, Friciu M, Forest J.M, Leclair G. Compatibilité du citrate de caféine injectable avec plusieurs autres médicaments. Pharmactuel 2017 ; 50,1 : 27-33.
3967	Revue	Staven V, Herra I, Wang S, Grönlie I, Tho I. Physical compatibility of total parenteral nutrition and drugs in Y-site administration to children from neonates to adolescents. J Pharm Pharmacol 2017 ;69,7:448-462
3976	Revue	Du Repaire T, Vigne P, Guedon A, Gauthier-Villano L, Bertault Peres P, Pourroy B. Visual compatibility of blinatumomab with selected co-administrated drugs during simulated Y-site administration. Am J Health-Syst Pharm 2017 ; 74,16 : 1217-1218
3985	Poster	Manai M., Soussi M.A., Lazreg O., Drira C., Ben Tekaya S. et Razgallah Khrouf M. Compatibilité physique entre médicaments injectables et nutrition parentérale pédiatrique : Evaluation in-vitro. Hopipharm Congress 2017 - Nancy 2017
4055	Revue	Monogue M, Almarzoky Abuhussain S, Kuti J, Nicolau D. Physical compatibility of fosfomycin for injection with select i.v. drugs during simulated Y-site administration. Am J Health-Syst Pharm 2018 , 75, 1:36-44
4130	Revue	Koller AK, Krebs S, Dörje F. Untersuchungen zur Kompatibilität von Clonidin mit häufig eingesetzten Arzneimittel auf Intensivstationen. Pharmaceutics 2021 , 13, 21.
4145	Revue	Asempta T.E, Avery L.M, Kidd J.M, Kuti J.L, Nicolau D.P. Physical compatibility of plazomicin with select i.v. drugs during simulated Y-site administration. Am J Health-Syst Pharm 2018 ;75,14:1048-1056
4154	Laboratoire	Bleomycin sulfate- Summary of Product Characteristics Accord Health Care 2018
4319	Revue	Lessard J-J, Caron E, Schérer H, Forest J-M, Leclair G. Compatibility of Y-site Injection of Meropenem Trihydrate With 101 Other Injectable Drugs. Hosp Pharm 2020 ; 55, 5: 332-337.
4332	Poster	Compatibilité de Glycophos® avec d'autres médicaments administrés en perfusion aux soins intensifs (SI) Compatibilité de Glycophos® avec d'autres médicaments administrés en perfusion aux soins intensifs (SI). JFSPH 2019 2019
4341	Revue	Van der Schaar JAJ, Grouls R, Franssen EJF, Crul M. Stability of Furosemide 5 mg/mL in Polypropylene Syringes. Int J Pharm Compound 2019 ;23,5:414-417
4370	Revue	Staven V, Wang S, Gronlie I, Tho I. Physical stability of an all-in one parenteral nutrition admixture for preterm infants upon mixing with micronutrients and drugs EJHP 2018 2018;0:1-7
4389	Revue	Côté K, Correal F, Metras M.E, Friciu M, Forest J.M, Leclair G. Compatibilité physique des médicaments administrés en Y aux soins intensifs, en particulier la dexmédétomidine, le lévamisolan et la kétamine. Pharmactuel 2019 ;52,4:206-213

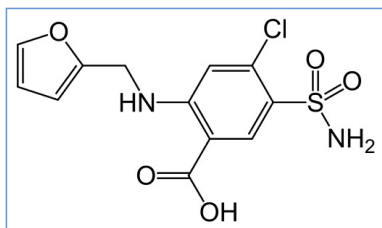
4419	Revue	Holt R.J, Siegert S.W.K, Krishna A. Physical Compatibility of Ibuprofen Lysine Injection with Selected Drugs During Simulated Y-site Injection. J Pediatr Pharmacol Ther 2008 ; 13, 3: 155-161.
4426	Revue	Watrobska-Swietlikowska D, Pietka M, Stanislaw Klek S. Evaluation of Y-site compatibility of home total parenteral nutrition and intravenous loop diuretics. Medicine 2019 98:21(e15747)
4433	Revue	Ghazi I.M, El Nekidy W.S, Sood A, Dulku A, Patel R, Patel K. Y-site Administration of Imipenem/Cilastatin/ Relebactam With Common Intravenous Medications Clin Ther 2020 ; 42, 3: 475-485.
4434	Revue	Avery L.M, Chen, I.H, Reyes, S, Nicolau, D.P, Kuti J.L. Assessment of the Physical Compatibility of Eravacycline and Common Parenteral Drugs During Simulated Y-site Administration. Clin Ther 2019 ; 41, 10: 2162-2170.
4491	Revue	De Basagoiti A, Katsumiti A, Abascal S, Bustinza A, López-Giménez L.R, Pilar P, De Miguel M, Campino A. Physical compatibility of alprostadil with selected drugs commonly used in the neonatal intensive care units. Eur J Pedia 2020
4506	Revue	Griffith S, Stapleton E, Padilla S, Mruk A, Thomas C. Physical compatibility of milrinone 1 mg/mL with select cardiovascular medications during simulated Y-site administration. Am J Health-Syst Pharm 2020 ;77,23:1938-1940.
4507	Revue	Ross E, Salinas A, Petty K, Her C, Carpenter J. Compatibility of medications with intravenous lipid emulsions: Effects of simulated Y-site mixing. Am J Health-Syst Pharm 2020 ;77,23:1980-1985
4515	Revue	Tomczak S, Stawny M, Jelinska A. Co-Administration of Drugs and Parenteral Nutrition: In Vitro Compatibility Studies of Loop Diuretics for Safer Clinical Practice. Pharmaceutics 2020
4521	Revue	Polo C, D'Huart E, Lesperlette G, Vigneron J, Meyer F, Demoré B. Compatibility of injectable posaconazole with drugs commonly used in a hematology care unit. Pharmaceutical Technology in Hospital Pharmacy 2020
4524	Poster	Stucki C, Sautter A-M, Bonnabry P. Physical compatibility of the propofol emulsion with 33 drugs used in anaesthesiology. ESCP Symposium, Geneva, Switzerland 2009
4528	Revue	Lu J, Liu Q, Kupiec T, Vail H, Lunch L, Fam D, Vu N. Physical Compatibility of Cefiderocol with Selected Intravenous Drugs During Simulated Y-site Administration. Int J Pharm Compound 2021 ;25,1:52-61
4570	Revue	Greenhill K, Hornsby E, Gorman G. Investigations of Physical Compatibilities of Commonly Used Intravenous Medications with and without Parenteral Nutrition in Pediatric Cardiovascular Intensive Care Unit Patients. Pharmaceutics 2019
4571	Laboratoire	Levosimendan (Simdax 2.5 mg/ml) - Summary of Product Characteristics Orion Pharma 2010
4603	Revue	Vallée M, Barthélémy I, Friciu M, Pelletier E, Forest J.M, Benoit F, Leclair G. Compatibility of Lactated Ringer's Injection With 94 Selected Intravenous Drugs During Simulated Y-site Administration. Hosp Pharm 2021 ; 56, 4: 228-234.
4605	Revue	Foinard A, Décaudin B, Barthélémy C, Debaene B, Odou P. Impact of physical incompatibility on drug mass flow rates: example of furosemide-midazolam incompatibility. Ann Allergy 2012 ; 2:28.
4651	Revue	De Basagoiti A, Katsumiti A, Abascal S, Bustinza A, López-Giménez L.R, Pascual P, De Miguel M, Campino A. Physical compatibility of alprostadil with selected drugs commonly used in the neonatal intensive care units. Eur J Pedia 2021 ;180,1169–1176.

4654	Poster	Sicard G, Donnette M, Martin N, Gensollen S, Pourroy B, Fanciullino R. Compatibilité visuelle du Vyxeos® lors d'administration en Y avec une sélection de médicaments injectables. Communication personnelle 2021
4698	Revue	Ayari G, Huart E, Vigneron J, Demoré B. Y-site compatibility of intravenous medications commonly used in intensive care units : laboratory tests on 75 mixtures involving nine main drugs. Pharmaceutical Technology in Hospital Pharmacy 2022
4724	Revue	Maktabi B, Howard MS, Baki G, Churchwell MD Intravenous Physical Compatibility of Heparin Sodium and Furosemide. Int J Pharm Compound 2022 ;26,6:522-526
4742	Revue	Macoviciuc M, Nguyen C, Forest J-M, Leclair G. Compatibilité physique de l'acétaminophène injectable avec 102 autres médicaments lors d'une administration en Y. Pharmactuel 2022 ; 55, 4: 247-255.
4768	Revue	Kondo M, Genpei M, Watanabe K, Yoshida M, Tagui N, Fukao S, Sugaya K, Takase H. Y-site injection physical compatibility of remdesivir with select intravenous drugs used in palliative care and for treating coronavirus disease 2019. Journal of Nippon Medical school 2023
4801	Revue	Ruiz V, Yuwei Shen Y, Abouelhassan Y, Fouad A, Nicolau D, Kuti J. Physical compatibility of sulbactam/durlobactam with select intravenous drugs during simulated Y-site administration. Am J Health-Syst Pharm 2024 ;51,1:

Stabilis



Furosemide



Stabilité des préparations

	500 mg Ipca Laboratoire®	Sirop simple >> 100 mL	2-8°C		30			4044
	500 mg Artenium®	Sirop simple >> 100 mL	2-8°C		30			4044
	500 mg Sanofi®	Sirop simple >> 100 mL	2-8°C		30			4044
	500 mg Ipca Laboratoire®	Sirop simple >> 100 mL	21-25°C		30			4044
	500 mg Artenium®	Sirop simple >> 100 mL	21-25°C		30			4044
	500 mg Sanofi®	Sirop simple >> 100 mL	21-25°C		30			4044
	200 mg ® = ?	Méthylparabène 100 mg NaOH 24 mg Saccharinate de sodium 100 mg Eau ppi >> 100 mL	22-28°C		270			4060
	200 mg ® = ?	Méthylparabène 100 mg NaH ₂ PO ₄ 1500 mg Saccharinate de sodium 100 mg Eau ppi >> 100 mL	22-28°C		270			4060
	200 mg ® = ?	Méthylparabène 100 mg NaOH 24 mg Saccharinate de sodium 100 mg Eau ppi >> 100 mL	40 +/- 0,5°C		270			4060
	200 mg ® = ?	Méthylparabène 100 mg Na ₂ HPO ₄ 1500 mg Saccharinate de sodium 100 mg Eau ppi >> 100 mL	40 +/- 0,5°C		30			4060
	964 mg ® = ?	SyrSpend SF Alka® >> 100 mL	2-8°C		14			3810



Bibliographie

	Type	Source
3810	Revue	Geiger C M, Sorenson B, Whaley P. Stability Assessment of 10 Active Pharmaceutical Ingredients Compounded in SyrSpend SF. Int J Pharm Compound 2015 ; 19, 5 : 420-427.
4044	Revue	Alfred-Ugbendo D, Zdoryk O.A, Georgiyants V.A. Quality assessment and stability study of compounded furosemide syrup. Pharm Sci Communications 2017 ;9:5:28-35
4060	Revue	Zahalka L, Klovrzova S, Matysova L, Sklupalova Z, Solich P. Furosemide ethanol-free oral solutions for paediatric use : formulation, HPLC method and stability study. EJHP 2018 ;25,3:144-149



Dictionnaire

	Diurétique		Injectable
	Noms commerciaux		Stabilité des solutions
	Contenant		Molécule
	Concentration		Température
	Conservation		Durée de stabilité
	Biosimilaire		Données conflictuelles
	Bibliographie		Polyvinyl chlorure
	Chlorure de sodium 0,9%		A l'abri de la lumière
	Jour		Lumière
	Seringue polypropylène		Heure
	Glucose 5%		Stabilité en mélange
	Solvant		Molécule
	Verre		NaCl 0,9% ou glucose 5%
	Aucun		Polypropylène
	Non précisé		Facteur influençant la stabilité
	Provoque		Dégradation
	Précipitation		Nutrition parentérale (mélange binaire)
	Compatibilités		Compatible
	Précipitation immédiate		Incompatible
	Turbidité en 4 heures		Incompatibilité non précisée
	Turbidité immédiate		Précipitation en 4 heures
	Eau pour préparation injectable	RL	Ringer lactate
	NaCl 0,9% + bactériostatique		Dégagement gazeux
	Turbidité en 1 heure		Nutrition parentérale (mélange ternaire)
	NaHCO3		Précipitation en 1 heure
	Précipitation en 5 heures		Précipitation en 2 heures
	Solvant spécifique		Modification du pH > 1 unité pH
	Instabilité chimique		Précipitation en 15 minutes
	Turbidité à 24 heures		Précipitation en 7 heures
	Voie d'administration		Intraveineuse

 Perfusion intraveineuse	 Perfusion continue
 Intramusculaire	 Sous cutanée
 Perfusion SC continue	 Bibliographie
 Solution buvable	 Stabilité des préparations
 Origine	 Excipient
 Poudre	 Comprimés
 Flacon plastique	 Non précisée
 Dictionnaire	