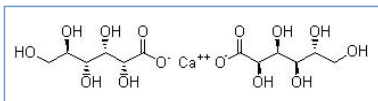


Stabilis

Na Ca
K Mg



Calcium gluconate



Noms commerciaux

Bon-Ker	Mexique
Calc GL	Italie
Calcimusc	Hongrie
Calcio gluconato	Colombie, Equateur
Calcium gluconate injection	Arabie Saoudite, Australie, Canada, Egypte, Grande Bretagne
Caltrex	Iran
Gluconat de calciu	Roumanie
Gluconate de calcium	France, Tunisie
Gluconato de calcio	Argentine, Colombie, Equateur, Pérou, Vénézuéla
Quibicalcium	Colombie
Suplecal	Espagne



Stabilité en mélange

Container	Stability	Concentration	Temp	Light	Other	Shelf	Code
PVC	▲▲	3,81 & 8,92 mg/ml	25°C	☀️	Magnesium sulfate : 3,81 & 8,92 mg/ml	7	3268
PVC	▲▲	3,81 & 8,92 mg/ml	5°C	☀️	Magnesium sulfate : 3,81 & 8,92 mg/ml	7	3268



Facteur influençant la stabilité

Water	NaHCO ₃	→	↓	3644
-------	--------------------	---	---	------



Compatibilités

Compatibility	Concentration	Stability	Code
☑️	Calcium gluconate : 100 mg/ml Aldesleukin : 0.0338 MUI/ml	◆	36
☑️	Calcium gluconate : 40 mg/ml Allopurinol sodium : 3 mg/ml	▲	307
☑️	Calcium gluconate : 0,04 mg/ml Alprostadil : 20 µg/ml	◆	4491

		Calcium gluconate : 10 mg/ml Alprostadil : 20 µg/ml		4651
		Calcium gluconate : 40 mg/ml Amifostine : 10 mg/ml		3
		Calcium gluconate Amikacin sulfate		3644
		Calcium gluconate : 10 mg/ml Amiodarone hydrochloride : 6 mg/ml		1611
		Calcium gluconate : 100 mg/ml Amoxicillin sodium / clavulanic acid : 100/10 mg/ml		3824
		Calcium gluconate Amphotericin B		3644
		Calcium gluconate : 40 mg/ml Amphotericin B cholesteryl sulfate complex : 0,83 mg/ml		921
		Calcium gluconate Amphotericin B cholesteryl sulfate complex		3644
		Calcium gluconate Amphotericin B lipid complex		3644
		Calcium gluconate Amphotericin B liposomale		3644
		Calcium gluconate Atropine sulfate		3644
		Calcium gluconate : 40 mg/ml Aztreonam : 40 mg/ml		99
		Calcium gluconate Betamethasone sodium phosphate		3644
		Calcium gluconate : 40 mg/ml Bivalirudin : 5 mg/ml		1713
		Calcium gluconate Bleomycin sulfate		4154
		Calcium gluconate Bleomycin sulfate		3644
		Calcium gluconate : 2 mg/ml Bretylum tosilate : 1 mg/ml		1193
		Calcium gluconate Butorphanol tartrate		3644
		Calcium gluconate : 100 mg/ml Caffeine : 10 mg/ml		3964
		Calcium gluconate Caffeine citrate		3644
		Calcium gluconate Cefalotin sodium		3644
		Calcium gluconate Cefamandole nafate		3546
		Calcium gluconate Cefamandole nafate		1165
		Calcium gluconate Cefamandole nafate		3644
		Calcium gluconate Cefamandole nafate		3644
		Calcium gluconate Cefamandole nafate : 2 >> 100 mg/ml		612

		Calcium gluconate Cefazolin sodium		3644
		Calcium gluconate : 20 mg/ml Cefiderocol sulfate tosylate : 20 mg/mL		4528
		Calcium gluconate Cefpirome sulfate		3644
		Calcium gluconate : 40 mg/ml Ceftaroline fosamil : 2,22 mg/ml	RL	3249
		Calcium gluconate : 40 mg/ml Ceftaroline fosamil : 2,22 mg/ml		3249
		Calcium gluconate Ceftazidime		3883
		Calcium gluconate : 40 mg/ml Ceftobiprole medocaril sodium : 2 mg/ml	RL	2269
		Calcium gluconate Ceftobiprole medocaril sodium		4650
		Calcium gluconate : 40 mg/ml Ceftobiprole medocaril sodium : 2 mg/ml		2269
		Calcium gluconate : 20 mg/ml Ceftolozane / tazobactam : 10/5 mg/ml		3828
		Calcium gluconate Chloroquine sulfate		3644
		Calcium gluconate : 40 mg/ml Cisatracurium besylate : 0.1 >> 5 mg/ml		299
		Calcium gluconate : 20 mg/ml Cisatracurium besylate : 1 mg/ml		3429
		Calcium gluconate : 40 mg/ml Cladribine : 0.015 mg/ml		1496
		Calcium gluconate Clindamycin phosphate		3526
		Calcium gluconate Daunorubicin/cytarabine liposomale : 0,4 mg/mL		4654
		Calcium gluconate Dexamethasone sodium phosphate		3644
		Calcium gluconate : 10 mg/ml		939
		Calcium gluconate Ceftriaxone disodium		3523
		Calcium gluconate Ceftriaxone disodium		2302
		Calcium gluconate Ceftriaxone disodium		3644
		Calcium gluconate Chloroquine phosphate		3644
		Calcium gluconate : 100 mg/ml Ciprofloxacin lactate : 2 mg/ml		261
		Calcium gluconate : 40 mg/ml Cladribine : 0.5 mg/ml		1496
		Calcium gluconate Clindamycin phosphate		3644
		Calcium gluconate : 100 mg/ml Cloxacillin sodium : 100 mg/ml		3012

		Calcium gluconate : 40 mg/ml Dexmedetomidine : 4 µg/ml		1712
		Calcium gluconate : 40 mg/ml		301
		Calcium gluconate Dimenhydrinate		2087
		Calcium gluconate Disodium glucose-1-phosphate tetrahydrate		4802
		Calcium gluconate : 2 mg/ml Dobutamine hydrochloride : 1 mg/ml		1058
		Calcium gluconate : 100 mg/ml Dobutamine hydrochloride : 2 mg/ml		1041
		Calcium gluconate Dobutamine hydrochloride		3644
		Calcium gluconate : 40 mg/ml Docetaxel : 0.9 mg/ml		1754
		Calcium gluconate : 40 mg/ml Doripenem : 5 mg/ml		2262
		Calcium gluconate : 100 mg/ml Doxapram hydrochloride : 2 mg/ml		1802
		Calcium gluconate Doxycycline hyclate		3644
		Calcium gluconate		3644
		Calcium gluconate : 40 mg/ml Doxorubicin hydrochloride liposome peg : 0.4 mg/ml		251
		Calcium gluconate : 19.8 mg/ml Enalaprilate : 0.05 mg/ml		1315
		Calcium gluconate Ephedrine sulfate		3644
		Calcium gluconate : 20 mg/ml Eravacycline : 0,6 mg/ml		4434
		Calcium gluconate : 100 mg/ml		4603
		Calcium gluconate : 40 mg/ml		1415
		Calcium gluconate Ergotamine tartrate		3644
		Calcium gluconate Etoposide phosphate		3644
		Calcium gluconate : 40 mg/ml Etoposide phosphate : 5 mg/ml		1410
		Calcium gluconate : 1 mg/ml Famotidine		397
		Calcium gluconate : 40 mg/ml Fenoldopam mesylate : 80 µg/ml		1803
		Calcium gluconate Fentanyl citrate		3644
		Calcium gluconate : 100 mg/ml Fentanyl citrate : 50 µg/ml		63
		Calcium gluconate : 40 mg/ml Filgrastim : 30 µg/ml		244
		Calcium gluconate : 2 mg/ml Flucloxacillin sodium : 20 mg/ml		1232

		Calcium gluconate : 100 mg/ml Fluconazole : 2 mg/ml		496
		Calcium gluconate Fludarabine phosphate		3644
		Calcium gluconate Fosaprepitant dimeglumine		2295
		Calcium gluconate Foscarnet sodium		3662
		Calcium gluconate : 20 mg/ml Fosfomycin : 30 mg/ml		4055
		Calcium gluconate : 2 mg/ml Furosemide : 1 mg/ml		1232
		Calcium gluconate : 100 mg/ml Furosemide : 10 mg/ml		3210
		Calcium gluconate : 40 mg/ml Gemcitabine hydrochloride : 10 mg/ml		1423
		Calcium gluconate Gentamicin sulfate		3644
		Calcium gluconate : 40 mg/ml Granisetron hydrochloride : 0.05 mg/ml		182
		Calcium gluconate Heparin sodium		1084
		Calcium gluconate : 40 mg/ml Hetastarch : 60 mg/ml		1721
		Calcium gluconate : 40 mg/ml Imipenem-Cilastatin / Relebactam : 5 mg/ml		4433
		Calcium gluconate : 100 mg/ml Indomethacin sodium trihydrate : 1 mg/ml		467
		Calcium gluconate Isavuconazonium sulfate		3644
		Calcium gluconate : 20 mg/ml Isavuconazonium sulfate : 1.5 mg/ml		3829
		Calcium gluconate Kanamycin sulfate		3644
		Calcium gluconate : 100 mg/ml Ketamine hydrochloride : 50 mg/ml		2109
		Calcium gluconate : 49.5 mg/ml Labetalol hydrochloride : 1 mg/ml		386
		Calcium gluconate : 40 mg/ml Lansoprazole : 0,55 mg/ml		1625
		Calcium gluconate : 2 mg/ml Lidocaine hydrochloride : 2 mg/ml		619
		Calcium gluconate : 2 mg/ml Lidocaine hydrochloride : 2 mg/ml		619
		Calcium gluconate : 40 mg/ml Linezolid : 2 mg/ml		1925
		Calcium gluconate Magnesium sulfate		3838
		Calcium gluconate : 3,81 & 8,92 mg/ml Magnesium sulfate : 3,81 & 8,92 mg/ml		3268
		Calcium gluconate Magnesium sulfate		3644

		Calcium gluconate : 40 mg/ml Melphalan : 0.1 mg/ml		169
		Calcium gluconate : 4 mg/ml Meropenem : 50 mg/ml		266
		Calcium gluconate : 100 mg/ml Meropenem : 50 mg/ml		4319
		Calcium gluconate : 4 mg/ml Meropenem : 1 mg/ml		266
		Calcium gluconate : 1 mg/ml Meropenem : 1 & 20 mg/ml		266
		Calcium gluconate Metoprolol tartrate		3644
		Calcium gluconate : 40 mg/ml Micafungin : 1.5 mg/ml		2108
		Calcium gluconate : 100 mg/ml Midazolam hydrochloride : 1 mg/ml		176
		Calcium gluconate : 200 mg/ml Milrinone lactate : 0.8 mg/ml		813
		Calcium gluconate Minocycline hydrochloride		3644
		Calcium gluconate Morphine sulfate		3644
		Calcium gluconate Morphine tartrate		3644
		Calcium gluconate : 100 mg/ml N-acetylcysteine : 200 mg/ml		3766
		Calcium gluconate : 100 mg/ml Naloxone hydrochloride : 0.4 mg/ml		3408
		Calcium gluconate Neostigmine methylsulfate		3644
		Calcium gluconate : 40 mg/ml Netilmicin sulfate : 5 mg/ml		1236
		Calcium gluconate Netilmicin sulfate		3644
		Calcium gluconate : 19.8 mg/ml Nicardipine hydrochloride : 0.1 mg/ml		1490
		Calcium gluconate Norepinephrine bitartrate		3644
		Calcium gluconate Omadacycline		4720
		Calcium gluconate : 40 mg/ml Oritavancin : 0.8 >>2 mg/ml		3152
		Calcium gluconate : 40 mg/ml Oxaliplatin : 0,5 mg/ml		1662
		Calcium gluconate Oxytetracycline hydrochloride		3644
		Calcium gluconate Pamidronate disodium		3619
		Calcium gluconate Pantoprazole sodium		2090
		Calcium gluconate : 100 mg/ml Paracetamol : 10 mg/ml		4742

		Calcium gluconate : 40 mg/ml Pemetrexed disodium : 20 mg/ml		1953
		Calcium gluconate Pemetrexed disodium		1914
		Calcium gluconate : 100 mg/ml Pentoxifyllin : 5 mg/ml		4538
		Calcium gluconate : 5 & 50 mg/ml Pentoxifyllin : 5 mg/ml		4538
		Calcium gluconate : 40 mg/ml Piperacillin sodium / tazobactam : 40/5 mg/ml		81
		Calcium gluconate : 20 mg/ml Plazomicin sulfate : 24 mg/ml		4145
		Calcium gluconate : 100 mg/ml Potassium chloride : 40 mEq/l	RL	730
		Calcium gluconate Potassium phosphate		3644
		Calcium gluconate Potassium phosphate		3621
		Calcium gluconate Prochlorperazine edysilate		3644
		Calcium gluconate : 10 mg/ml Prochlorperazine edysilate : 5 mg/ml		132
		Calcium gluconate : 40 mg/ml Propofol : 10 mg/ml		300
		Calcium gluconate Protamine sulfate		3644
		Calcium gluconate : 40 mg/ml Remifentanil hydrochloride : 25 & 250 µg/ml		59
		Calcium gluconate Salbutamol sulfate		3644
		Calcium gluconate : 100 mg/ml Salbutamol sulfate : 1 mg/ml		3216
		Calcium gluconate : 40 mg/ml Sargramostim : 10 µg/ml		335
		Calcium gluconate Sildenafil citrate		3644
		Calcium gluconate Sodium bicarbonate		3644
		Calcium gluconate Sodium citrate		3644
		Calcium gluconate : 100 mg/ml Sodium Phosphate : 3 mmol/ml		789
		Calcium gluconate Sodium Phosphate		3644
		Calcium gluconate Streptomycin sulfate		3644
		Calcium gluconate Sufentanil citrate		3644
		Calcium gluconate : 20 mg/ml Sulbactam/durlobactam : 15/15 mg/ml		4801
		Calcium gluconate : 100 mg/ml Tacrolimus : 1000 µg/ml		479

		Calcium gluconate Tedizolid phosphate		3644
		Calcium gluconate : 20 mg/ml Tedizolid phosphate : 0.8 mg/ml		3827
		Calcium gluconate Tedizolid phosphate		3753
		Calcium gluconate : 40 mg/ml Telavancin hydrochloride : 7.5 mg/ml		3254
		Calcium gluconate : 40 mg/ml Telavancin hydrochloride : 7.5 mg/ml	RL	3254
		Calcium gluconate : 40 mg/ml Teniposide : 0.1 mg/ml		905
		Calcium gluconate Terbutaline sulfate		3644
		Calcium gluconate : 100 mg/ml Thiopental sodium : 25 mg/ml		3767
		Calcium gluconate : 40 mg/ml Thiotepa : 1 mg/ml		249
		Calcium gluconate Tigecycline		3644
		Calcium gluconate : 16 mg/ml Tobramycin sulfate : 5 mg/ml		503
		Calcium gluconate : 33 mg/ml Tobramycin sulfate : 1 mg/ml		503
		Calcium gluconate Tobramycin sulfate		3644
		Calcium gluconate Trisodium citrate		3644
		Calcium gluconate : 2 mg/ml Verapamil hydrochloride : 0,08 mg/ml		706
		Calcium gluconate Vinblastine sulfate		3644
		Calcium gluconate Vincristine sulfate		3644
		Calcium gluconate Vincristine sulfate liposome		3644
		Calcium gluconate Vindesine sulfate		3644
		Calcium gluconate : 40 mg/ml Vinorelbine tartrate : 1 mg/ml		84
		Calcium gluconate Vinorelbine tartrate		3644
		Calcium gluconate Zoledronic acid		3933



Bibliographie

	Type	Source
3	Revue	Trissel LA, Martinez JF. Compatibility of amifostine with selected drugs during simulated Y-site administration. Am J Health-Syst Pharm 1995 ; 52: 2208-2212.
36	Revue	Alex S, Gupta SL, Minor JR, Turcovski-Corrales S, Gallelli JF, Taub D, Piscitelli SC. Compatibility and activity of aldesleukin (recombinant interleukin-2) in presence of selected drugs during simulated Y-site administration: Evaluation of three methods. Am J Health-Syst Pharm 1995 ; 52: 2423-2426.
59	Revue	Trissel LA, Gilbert DL, Martinez JF, Kim MC. Compatibility of remifentanyl hydrochloride with selected drugs during simulated Y-site administration. Am J Health-Syst Pharm 1997 ; 54: 2192-2196.
63	Revue	Marquardt Ed, Lam SSY. Visual compatibility of fentanyl citrate with selected drugs during simulated Y-site injection. Am J Hosp Pharm 1994 ; 51: 811-812.
81	Revue	Trissel LA, Martinez JF. Compatibility of piperacillin sodium plus tazobactam with selected drugs during simulated Y-site injection. Am J Hosp Pharm 1994 ; 51: 672-678.
84	Revue	Trissel LA, Martinez JF. Visual, turbidimetric, and particle-content assessment of compatibility of vinorelbine tartrate with selected drugs during simulated Y-site injection. Am J Hosp Pharm 1994 ; 51: 495-499.
99	Revue	Trissel LA, Martinez JF. Compatibility of aztreonam with selected drugs during simulated Y-site administration. Am J Health-Syst Pharm 1995 ; 52: 1086-1090.
132	Revue	Najari Z, Rusho WJ. Compatibility of commonly used bone marrow transplant drugs during Y-site delivery. Am J Health-Syst Pharm 1997 ; 54: 181-184.
169	Revue	Trissel LA, Martinez JF. Physical compatibility of melphalan with selected drugs during simulated Y-site administration. Am J Hosp Pharm 1993 ; 50: 2359-2363.
176	Revue	Mantong ML, Marquardt ED. Visual compatibility of midazolam hydrochloride with selected drugs during simulated Y-site injection. Am J Health-Syst Pharm 1995 ; 52: 2567-2568.
182	Revue	Trissel LA, Gilbert DL, Martinez JF. Compatibility of granisetron hydrochloride with selected drugs during simulated Y-site administration. Am J Health-Syst Pharm 1997 ; 54: 56-60.
244	Revue	Trissel LA, Martinez JF. Compatibility of filgrastim with selected drugs during simulated Y-site administration. Am J Hosp Pharm 1994 ; 51: 1907-1913.
249	Revue	Trissel LA, Martinez JF. Compatibility of thiotepa (lyophilized) with selected drugs during simulated Y-site administration. Am J Health-Syst Pharm 1996 ; 53: 1041-1045.

251	Revue	Trissel LA, Gilbert DL, Martinez JF. Compatibility of doxorubicin hydrochloride liposome injection with selected other drugs during simulated Y-site administration. Am J Health-Syst Pharm 1997 ; 54: 2708-2713.
261	Revue	Percy LA, Rho JP. Visual compatibility of ciprofloxacin with selected components of total parenteral nutrient solutions during simulated Y-site injection. Am J Hosp Pharm 1993 ; 50: 715-716.
266	Revue	Patel PR. Compatibility of meropenem with commonly used injectable drugs. Am J Health-Syst Pharm 1996 ; 53: 2853-2855.
299	Revue	Trissel LA, Martinez JF, Gilbert DL. Compatibility of cisatracurium besylate with selected drugs during simulated Y-site administration. Am J Health-Syst Pharm 1997 ; 54: 1735-1741.
300	Revue	Trissel LA, Gilbert DL, Martinez JF. Compatibility of propofol injectable emulsion with selected drugs during simulated Y-site administration. Am J Health-Syst Pharm 1997 ; 54: 1287-1292.
301	Revue	Trissel LA, Gilbert DL, Martinez JF, Baker MB, Walter WV, Mirtallo JM. Compatibility of parenteral nutrient solutions with selected drugs during simulated Y-site administration. Am J Health-Syst Pharm 1997 ; 54: 1295-1300.
307	Revue	Trissel LA, Martinez JF. Compatibility of allopurinol sodium with selected drugs during simulated Y-site administration. Am J Hosp Pharm 1994 ; 51: 1792-1799.
335	Revue	Trissel LA, Bready BB, Kwan JW, Santiago NM. Visual compatibility of sargramostim with selected antineoplastic agents, anti-infectives, or other drugs during simulated Y-site injection. Am J Hosp Pharm 1992 ; 49: 402-406.
386	Revue	Colucci RD, Cobuzzi LE, Halpern NA. Visual compatibility of labetalol hydrochloride injection with various injectable drugs during simulated Y-site injection. Am J Hosp Pharm 1988 ; 45: 1357-1358.
397	Revue	Fong PA, Ward J. Visual compatibility of intravenous famotidine with selected drugs. Am J Hosp Pharm 1989 ; 46: 125-126.
467	Revue	Ishisaka DY, van Vleet J, Marquardt E. Visual compatibility of indomethacin sodium trihydrate with drugs given to neonates by continuous infusion. Am J Hosp Pharm 1991 ; 48: 2442-2443.
479	Revue	Min DI, Brown T, HWang GC. Visual compatibility of tacrolimus with commonly used drugs during simulated Y-site injection. Am J Hosp Pharm 1992 ; 49: 2964-2966.
496	Revue	Lor E, Sheybani T, Takagi J. Visual compatibility of fluconazole with commonly used injectable drugs during simulated Y-site administration. Am J Hosp Pharm 1991 ; 48: 744-746.
503	Revue	Nahata MC, Durrell DE. Stability of tobramycin sulfate in admixtures with calcium gluconate. Am J Hosp Pharm 1985 ; 45: 1987-1988.
612	Revue	Frale RA, Klink PR, Engel GL, Mundell EE. Stability of cefamandole nafate injection with parenteral solutions and additives. Am J Hosp Pharm 1982 ; 39: 622-627.
619	Revue	Kirschenbaum HL, Aronoff W, Perentesis GP, Plitz GW, Cutie AJ. Stability and compatibility of lidocaine hydrochloride with selected large-volume parenterals and drugs additives. Am J Hosp Pharm 1982 ; 39: 1013-1015.

706	Revue	Cutie MR. Compatibility of verapamil hydrochloride with other additives. Am J Hosp Pharm 1981 ; 38: 231.
730	Revue	Allen LV, Saul Levinson R, Phisutsinthop D. Compatibility of various admixtures with secondary additives at Y-injection site of intravenous administration sets. Am J Hosp Pharm 1977 ; 34: 939-943.
789	Revue	Garner SS, Wiest DB. Compatibility of drugs separated by a fluid barrier in a retrograde intravenous infusion system. Am J Hosp Pharm 1990 ; 47: 604-606.
813	Revue	Akkermann SR, Zhang H, Mullins RE, Yaughn K. Stability of milrinone lactate in the presence of 29 critical care drugs and 4 IV solutions. Am J Health-Syst Pharm 1999 ; 56: 63-68.
905	Revue	Trissel LA, Martinez JF. Screening teniposide for Y-site physical incompatibilities. Hosp Pharm 1994 ; 29: 1010-1017.
921	Revue	Trissel LA, Gilbert DL, Martinez JF. Incompatibility and compatibility of amphotericin B cholesteryl sulfate complex with selected other drugs during simulated Y-site administration. Hosp Pharm 1998 ; 33: 284-292.
939	Revue	Gilbar PJ, Groves CF. Visual compatibility of total parenteral nutrition solution (Synthamin 17 Premix*) with selected drugs during simulated Y-site injection. Aust J Hosp Pharm 1994 ; 24: 167-170.
1041	Revue	Hasegawa GR, Eder JF. Visual compatibility of dobutamine hydrochloride with other injectable drugs. Am J Hosp Pharm 1984 ; 41: 949-951.
1058	Revue	Kirschenbaum HL, Aronoff W, Piltz GW, Perentesis GP, Cutie AJ. Compatibility and stability of dobutamine hydrochloride with large-volume parenterals and selected additives. Am J Hosp Pharm 1983 ; 40: 1690-1691.
1084	Revue	Raupp P, von Kriek R, Schmidt E, Pfahl HG, G?nther O. Incompatibility between fat emulsion and calcium plus heparin in parenteral nutrition of premature babies. Lancet 1988 ; 1(8587): 700.
1165	Revue	Bowtle WJ, Heasman MJ, Prince AP, Easthope DA. Compatibility of the cephalosporin, cefamandole nafate with injections. Int J Pharm 1980 ; 4: 263-265.
1193	Revue	Perentesis GP, Plitz GW, Kirschenbaum HL, Navalakha P, Aronoff W, Cutie AJ. Stability and visual compatibility of bretylium tosylate with selected large-volume parenterals and additives. Am J Hosp Pharm 1983 ; 40: 1010-1012.
1232	Revue	Beatson C, Taylor A. A physical compatibility study of furosemide & flucloxacillin injections. Br J Pharm Pract 1987 ; 9: 223-226, 236.
1236	Revue	Kuhn RJ, Nahata MC. Stability of netilmicin sulfate in admixtures with calcium gluconate and aminophylline. Am J Hosp Pharm 1986 ; 43: 1241-1242.
1315	Revue	Halpern NA, Colucci RD, Alicea M, Greenstein R. Visual compatibility of enalaprilat with commonly used critical care medications during simulated Y-site injection. Int J Pharm Clin Pharmacol Ther Tox 1989 ; 27: 294-297.
1410	Revue	Trissel LA, Martinez JF, Simmons M. Compatibility of etoposide phosphate with selected drugs during simulated Y-site injection. J Am Pharm Assoc 1999 ; 39: 141-145.
1415	Revue	Trissel L.A, Gilbert D.L, Martinez J.F, Baker M.B, Walter W.V, Mirtallo J.M. Compatibility of medications with 3-in-1 parenteral nutrition admixtures. JPEN 1999 ; 23: 67-74.

1423	Revue	Trissel LA, Martinez JF, Gilbert DL. Compatibility of gemcitabine hydrochloride with 107 selected drugs during simulated Y-site injection. J Am Pharm Assoc 1999 ; 39: 514-518.
1490	Revue	Halpern NA, Colucci RD, Alicea M, Greenstein R. The compatibility of nicardipine hydrochloride injection with various ICU medications during simulated Y-site injection. Int J Pharm Clin Pharmacol Ther Tox 1989 ; 27: 250-254.
1496	Revue	Trissel LA, Martinez JF, Gilbert DL. Screening cladribine for Y-site physical compatibility with selected drugs. Hosp Pharm 1996 ; 31: 1425-1428.
1611	Revue	Chalmers JR, Bobek MB, Militello MA. Visual compatibility of amiodarone hydrochloride injection with various intravenous drugs. Am J Health-Syst Pharm 2001 ; 58: 504-506.
1625	Revue	Trissel LA, Saenz C, Williams YW, Ingram D. Incompatibilities of lansoprazole injection with other drugs during simulated Y-site coadministration. Int J Pharm Compound 2001 ; 5: 314-321.
1662	Revue	Trissel LA, Saenz CA, Ingram DS, Ogundele AB. Compatibility screening of oxaliplatin during simulated Y-site administration with other drugs. J Oncol Pharm Practice 2002 ; 8: 33-37.
1712	Revue	Trissel LA, Saenz CA. Compatibility screening of Precedex during simulated Y-site administration with other drugs. Int J Pharm Compound 2002 ; 6: 230-233.
1713	Revue	Trissel LA, Saenz CA. Compatibility screening of bivalirudin during simulated Y-site administration with other drugs. Int J Pharm Compound 2002 ; 6: 311-315.
1721	Revue	Trissel LA, Williams KY, Baker MB. Compatibility screening of Hextend during simulated Y-site administration with other drugs. Int J Pharm Compound 2001 ; 5: 69-72.
1754	Revue	Trissel LA, Gilbert DL, Wolkin AC. Compatibility of docetaxel with selected drugs during simulated Y-site administration. Int J Pharm Compound 1999 ; 3: 241-244.
1802	Revue	Bell MS, Nolt DH. Visual compatibility of doxapram hydrochloride with drugs commonly administered via a Y-site in the intensive care nursery. Am J Health-Syst Pharm 2003 ; 60: 193-194.
1803	Revue	Trissel LA, Saenz CA, Ogundele OB, Ingram D, Baker MB. Compatibility of fenoldopam mesylate with other drugs during simulated Y-site administration. Am J Health-Syst Pharm 2003 ; 60: 80-85.
1914	Laboratoire	Pemetrexed (Alimta®) - Summary of Product Characteristics Eli Lilly 2016
1925	Revue	Trissel LA, Williams KY, Gilbert DL. Compatibility screening of linezolid injection during simulated Y-site administration with other drugs and infusion solutions. J Am Pharm Assoc 2000 ; 40: 515-519.
1953	Revue	Trissel LA, Saenz CA, Ogundele AB, Ingram DS. Physical compatibility of pemetrexed disodium with other drugs during simulated Y-site administration. Am J Health-Syst Pharm 2004 ; 61: 2289-2293.
2087	Revue	Ferreira E, Forest JM, Hildgen P. Compatibility of dimenhydrinate injectable by Y administration. Pharmactuel 2004 ; 37: 17-20.
2090	Revue	Pere H, Chasse V, Forest JM, Hildgen P. Compatibility of injectable pantoprazole in Y-site administration. Pharmactuel 2004 ; 37: 193-196.

2108	Revue	Trusley C, Kupiec TC, Trissel LA. Compatibility of micafungin injection with other drugs during simulated Y-site co-administration. Int J Pharm Compound 2006 ; 10: 230-232.
2109	Revue	Pelletier E, Forest JM, Hildgen P. Compatibilité de la kétamine injectable lors de l'administration en dérivé avec d'autres médicaments usuels. Pharmactuel 2006 ; 39: 71-75.
2262	Revue	Brammer MK, Chan P, Heatherly K, Trusley C, Kupiec TC, Trissel LA, Psathas PA, Gilmor T, Schaufelberger D. Compatibility of doripenem with other drugs during simulated Y-site administration Am J Health-Syst Pharm 2008 ; 65: 1261-1265.
2269	Revue	Chan P, Bishop A, Kupiec TC, Trissel LA, Gole D, Jimidar IM, Vermeersch H. Compatibility of ceftobiprole medocaril with selected drugs during simulated Y-site administration. Am J Health-Syst Pharm 2008 ; 65, 16: 1545-1551.
2295	Laboratoire	Fosaprepitant (Emend®) - Summary of Product Characteristics Merck Sharp Dohme 2013
2302	Laboratoire	Ceftriaxone et incompatibilités physico-chimiques, particulièrement avec les solutions contenant des sels de calcium.
3012	Revue	Sullivan H, Farris J, N. J. Cochran 2008 ; 61, 5: 356-357. Compatibility of Cloxacillin Sodium with Selected Intravenous Drugs During Simulated Y-Site Administration Hosp Pharm 2015 ; 50, 3: 214-220.
3152	Revue	Kumar A, Mann HJ. Visual compatibility of oritavancin diphosphate with selected coadministered drugs during simulated Y-site administration. Am J Health-Syst Pharm 2010 ; 67: 1640-1644.
3210	Revue	Jasti Bhaskara R, Saraf Poonam. Compatibility of Parenteral Furosemide with Seventeen Secondary Drugs Used in Standard Concentrations. Int J Pharm Compound 2011 ; 15, 3: 259-261.
3216	Revue	Legris ME, Valiquette ME, Lavoie A, Forest JM, Leclair G. Compatibilité physique par évaluation visuelle du salbutamol injectable lors de son administration en Y. Pharmactuel 2011 ; 44, 1 : 14-18
3249	Revue	Singh BM, Dedhiya MG, Dinunzio J, Chan P, Kupiec TC, Trissel LA, Laudano JB. Compatibility of ceftaroline fosamil for injection with selected drugs during simulated Y-site administration. Am J Health-Syst Pharm 2011 ; 68: 2163-2169.
3254	Revue	Housman S.T, Tessier P.R, Nicolau D.P, Kuti J.L. Physical compatibility of telavancin hydrochloride with select i.v. drugs during simulated Y-site administration Am J Health-Syst Pharm 2011 ; 68: 2265-2270.
3268	Revue	Beauregard N, Bertrand N, Dufour A, Blaizel O, Leclair G Physical compatibility of calcium gluconate and magnesium sulfate injections. Am J Health-Syst Pharm 2012 ;69: 98.
3408	Revue	Tollec S, Touzin K, Pelletier E, Forest J.M. Evaluation visuelle de la compatibilité physique de la naloxone avec d'autres médicaments intraveineux usuels. Pharmactuel 2013 ; 46, 1 : 16-21.
3429	Revue	Foushee J.A, Fox L.M, Gormley L.R, Lineberger M.S. Physical compatibility of cisatracurium with selected drugs during simulated Y-site administration Am J Health-Syst Pharm 2015 ; 72:483-486
3523	Laboratoire	Ceftriaxone (Rocephin®) - Summary of Product Characteristics. Roche 2018
3526	Laboratoire	Clindamycin (Dalacin®) - Summary of Product Characteristics Pharmacia 2010
3546	Laboratoire	Cefamandole Flavelab - Résumé des caractéristiques du produit Panpharma SA 2007
3619	Laboratoire	Pamidronate (Pamidronate Actavis®) - Summary of Product Characteristics Wockhardt 2016

3621	Laboratoire	Phosphate dipotassique - Résumé des caractéristiques du produit Renaudin 2008
3644	Laboratoire	Calcium gluconate® - Summary of Product Characteristics Hameln Pharmaceuticals 2010
3662	Laboratoire	Foscavir (Foscarnet®) - Summary of Product Characteristics Clinigen 2014
3753	Laboratoire	Tedizolid phosphate (Sivextro®) - Summary of Product Characteristics Cubist Pharmaceuticals 2014
3766	Revue	Forrest J.M, Hildgen P. Compatibilité de l'acétylcystéine injectable lors de son administration en Y avec d'autres médicaments usuels Pharmactuel 2014 ; 47, 3 : 161-165.
3767	Revue	Legris M.E, Lavoie A, Forrest J.M, Hildgen P. Compatibilité par évaluation visuelle du thiopental injectable lors de son administration en Y avec des médicaments usuels. Pharmactuel 2014 ; 47, 3 : 167-172.
3824	Revue	Boudi S, Roy H, Forest JM, Leclair G. Compatibilité physique de l'association amoxicilline-acide clavulanique en injection avec plusieurs autres médicaments lors d'une administration en Y. Pharmactuel 2023 2023;56,3:91-98
3827	Poster	Ghazi I.M, Hamada Y, Nicolau D.P. Compatibility of tedizolid phosphate with selected intravenous drugs via simulated Y-site conditions. ASHP Midyear 2015
3828	Poster	Thabit A.K, Hamada Y, Nicolau D.P. Ceftazolidone/tazobactam physical compatibility during simulated Y-site administration. ASHP Midyear 2015
3829	Poster	So W, Kim L, Thabit A.K, Nicolau D.P, Kuti J.L. Compatibility of isavunazonium sulfate during simulated Y-site administration. ASHP Midyear 2015
3838	Laboratoire	Magnesium Sulphate - Summary of Product Characteristics Martindale Pharmaceuticals Ltd 2007
3883	Laboratoire	Ceftazidime - Résumé des caractéristiques du produit Arrow 2016
3933	Laboratoire	Acide zolédronique - (Acide zoledronique Teva Pharma) - Résumé des caractéristiques du produit Teva Laboratoire 2015
3964	Revue	Audet M.A, Forest E, Friciu M, Forest J.M, Leclair G. Compatibilité du citrate de caféine injectable avec plusieurs autres médicaments. Pharmactuel 2017 ; 50,1 : 27-33.
4055	Revue	Monogue M, Almarzoky Abuhussain S, Kuti J, Nicolau D. Physical compatibility of fosfomycin for injection with select i.v. drugs during simulated Y-site administration. Am J Health-Syst Pharm 2018 , 75, 1:36-44
4145	Revue	Asempta T.E, Avery L.M, Kidd J.M, Kuti J.L, Nicolau D.P. Physical compatibility of plazomicin with select i.v. drugs during simulated Y-site administration. Am J Health-Syst Pharm 2018 ;75,14:1048-1056
4154	Laboratoire	Bleomycin sulfate- Summary of Product Characteristics Accord Health Care 2018
4319	Revue	Lessard J-J, Caron E, Schérer H, Forest J-M, Leclair G. Compatibility of Y-site Injection of Meropenem Trihydrate With 101 Other Injectable Drugs. Hosp Pharm 2020 ; 55, 5: 332-337.
4433	Revue	Ghazi I.M, El Nekidy W.S, Sood A, Dulku A, Patel R, Patel K. Y-site Administration of Imipenem/Cilastatin/ Relebactam With Common Intravenous Medications Clin Ther 2020 ; 42, 3: 475-485.

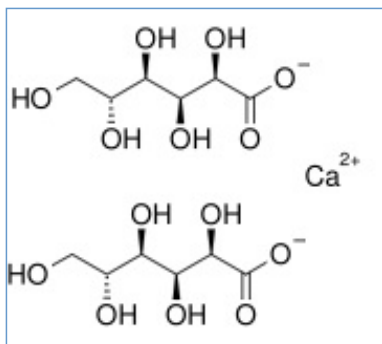
4434	Revue	Avery L.M, Chen, I.H, Reyes, S, Nicolau, D.P, Kuti J.L. Assessment of the Physical Compatibility of Eravacycline and Common Parenteral Drugs During Simulated Y-site Administration. Clin Ther 2019 ; 41, 10: 2162-2170.
4491	Revue	De Basagoiti A, Katsumiti A, Abascal S, Bustinza A, López-Giménez L.R, Pilar P, De Miguel M, Campino A. Physical compatibility of alprostadil with selected drugs commonly used in the neonatal intensive care units. Eur J Pedia 2020
4528	Revue	Lu J, Liu Q, Kupiec T, Vail H, Lunch L, Fam D, Vu N. Physical Compatibility of Cefiderocol with Selected Intravenous Drugs During Simulated Y-site Administration. Int J Pharm Compound 2021 ;25,1:52-61
4538	Revue	Campbell A, Petrovski M, Senarathna G, Mukadam ,Strunk T, Batty K. Compatibility of pentoxifylline and parenteral medications. Archives of Disease in Childhood 2020 ; 105: 395-397.
4603	Revue	Vallée M, Barthélémy I, Friciu M, Pelletier E, Forest J.M, Benoit F, Leclair G. Compatibility of Lactated Ringer's Injection With 94 Selected Intravenous Drugs During Simulated Y-site Administration. Hosp Pharm 2021 ; 56, 4: 228-234.
4650	Laboratoire	Ceftobiprole (Zevtera 500 mg powder for concentrate for solution for infusion.) Summary of Product Characteristics, Advanz Pharma updated 4 aug 2021. Advanz Pharma 2021
4651	Revue	De Basagoiti A, Katsumiti A, Abascal S, Bustinza A, López-Giménez L.R, Pascual P, De Miguel M, Campino A. Physical compatibility of alprostadil with selected drugs commonly used in the neonatal intensive care units. Eur J Pedia 2021 ;180,1169–1176.
4654	Poster	Sicard G, Donnette M, Martin N, Gensollen S, Pourroy B, Fanciullino R. Compatibilité visuelle du Vyxeos® lors d'administration en Y avec une sélection de médicaments injectables. Communication personnelle 2021
4720	Laboratoire	Nuzyra (amadacycline - Full prescribing information. Paratek Pharmaceuticals updated May 2021. Paratek Pharmaceuticals 2021
4742	Revue	Macoviciuc M, Nguyen C, Forest J-M, Leclair G. Compatibilité physique de l'acétaminophène injectable avec 102 autres médicaments lors d'une administration en Y. Pharmactuel 2022 ; 55, 4: 247-255.
4801	Revue	Ruiz V, Yuwei Shen Y, Abouelhassan Y, Fouad A, Nicolau D, Kuti J. Physical compatibility of sulbactam/durlobactam with select intravenous drugs during simulated Y-site administration. Am J Health-Syst Pharm 2024 ;51,1:
4802	Laboratoire	Glucose-1-Phosphate disodique tétrahydraté (Phocytan®) - Résumé des caractéristiques du produit Aguettant Laboratory 2021

Stabilis

Na Ca
K Mg



Calcium gluconate



Stabilité des préparations

		Hydroxyéthylcellulose 3 g Propylène Glycol 5 g Eau purifiée 87 g	25°C	?	180			3017



Bibliographie

	Type	Source
3017	Revue	Rotheli-Simmen B, Martinelli E, Muhlebach S. Formulation of a stable calcium gluconate gel for topical treatment of hydrofluoric acid burns. Eur Hosp Pharm 1996 ; 2: 176-180.



Dictionnaire

	électrolyte		Injectable
	Noms commerciaux		Stabilité en mélange
	Contenant		Solvant
	Concentration		Température
	Conservation		Molécule
	Durée de stabilité		Bibliographie
	Polyvinyl chlorure		NaCl 0,9% ou glucose 5%
	A l'abri de la lumière		Jour
	Facteur influençant la stabilité		NaHCO3
	Provoque		Précipitation
	Compatibilités		Compatible
	Glucose 5%		Chlorure de sodium 0,9%
	Glucose 10%		Incompatibilité non précisée
	Incompatible		Précipitation immédiate
	Instabilité chimique		Aucun
RL	Ringer lactate		Turbidité immédiate
	Nutrition parentérale (mélange binaire)		NaCl 0,9% + bactériostatique
	Eau pour préparation injectable		Changement de couleur en 24 heures
	Précipitation en 24 heures		Nutrition parentérale (mélange ternaire)
	Instabilité de l'émulsion immédiate		Solvant spécifique
	Précipitation en 1 heure		Changement de couleur à 4 heures
	NaCl 0,45% Glucose 5%		Précipitation en 4 heures
	Voie d'administration		Intraveineuse
	Perfusion continue		Bibliographie
	Forme dermique		Stabilité des préparations
	Origine		Excipient
	Biosimilaire		Données conflictuelles
	Verre		Poudre
	Non précisée		Dictionnaire